



KCP

CONCRETE PUMPS

Boom Pumps | Trailer & Line Pumps | Placing Booms



SIMPLE BY DESIGN POWERFUL BY NATURE

What looks effortless often takes the most thought. KCP's machines are built to be understood at a glance and trusted for a lifetime.

KCP Concrete Pumps Designed with You in Mind

KCP pumps are engineered to be the most user-friendly on the market.

The advanced Open-Loop Circuit System minimizes heat generation in hydraulic oil, making maintenance easier and extending the system's service life.

KCP Boom Pumps feature an optimized boom design with fewer curves, reducing resistance during pumping for greater efficiency and performance.

At KCP, simplicity drives everything we do. Our mission is to provide the most streamlined hydraulic and electrical systems on the market. By removing unnecessary computerized controls, we've made troubleshooting straightforward and stress-free. Simply put, we've taken the 'trouble' out of troubleshooting.



Rexroth
Bosch Group

Main Pump



Remote Control

STRENX
PERFORMANCE STEEL

Steel

HAWB
HYDRAULIK

Control Valve

KCP CONCRETE PUMPS BOOM PUMPS





KCP20RZ90



Boom Specifications

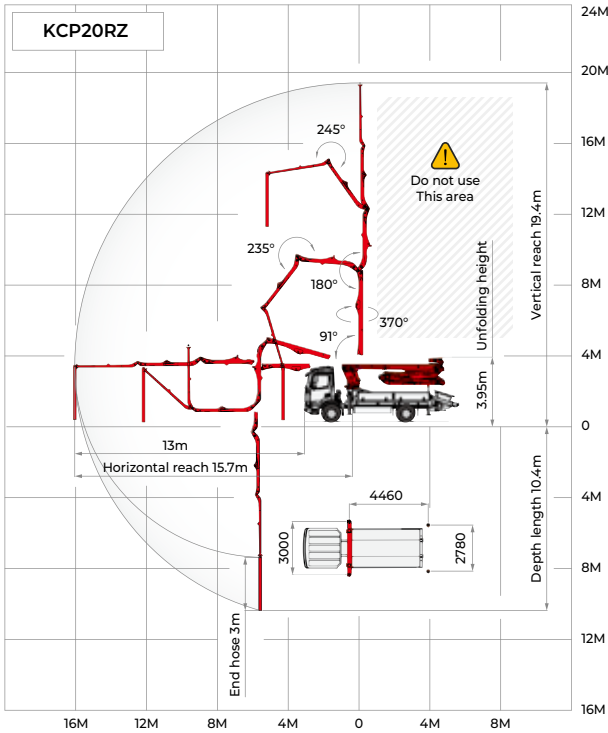
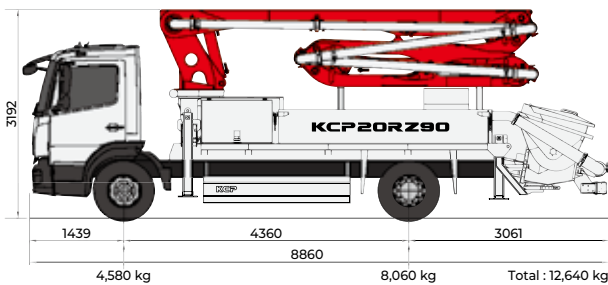
Vertical reach	19.4 m	
Horizontal reach	16 m	
Reach from front of truck	13 m	
Unfolding height	3.95 m	
Section articulation	91°/180°/235°/245°	
Rotation	370°	
Delivery line	125 mm	
Proportional boom	Yes	
End hose length	3 m	
Outrigger spread-front	3 m	T type
Outrigger spread-rear	2.8 m	A type
Max. outrigger weight	9,000 kg	

Pump Specifications

Maximum output	90 m³/h
Concrete cylinder	Ø230 × 1,100 mm
Stroke per minute	34
Concrete pressure	Max. 80 bar
Hopper capacity	0.6 m³
S-tube	Ø200×Ø180
Hydraulic pump	Rexroth-A11VLO190
Cycling system	Hydraulic with manual overrides
Max. aggregate size	40 mm

► Photos and drawings are for illustrative purpose only. / ► Right to make technical amendments reserved. / ► Both Rexroth and Kawasaki pump cell available. / ► Dimension will vary with different truck makes, models and specifications. / ► Maximum theoretical values listed.

Working Diagram



KCP24RZ120



Boom Specifications

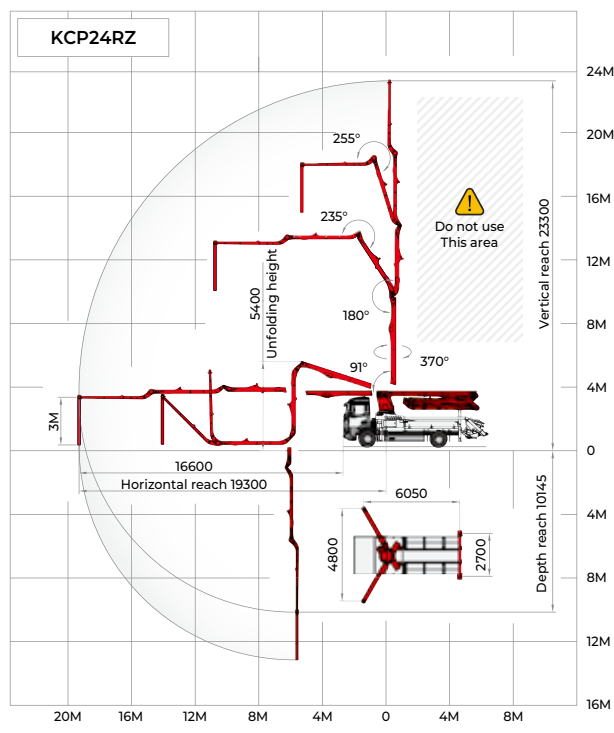
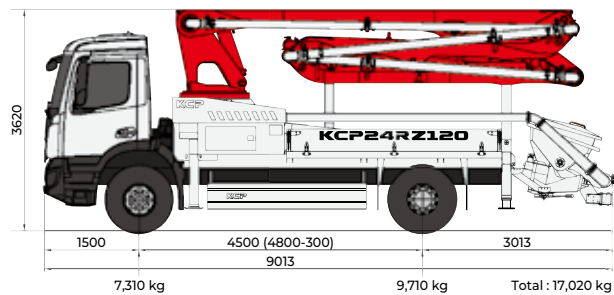
Vertical reach	23.3 m	
Horizontal reach	19.3 m	
Reach from front of truck	16.6 m	
Unfolding height	5.4 m	
Section articulation	91°/180°/235°/255°	
Rotation	370°	
Delivery line	125 mm	
Proportional boom	Yes	
End hose length	3 m	
Outrigger spread-front	4.8 m	X type
Outrigger spread-rear	2.7 m	A type
Max. outrigger weight	11,000 kg	

Pump Specifications

Maximum output	120 m³/h
Concrete cylinder	Ø230 × 1,400 mm
Stroke per minute	35
Concrete pressure	Max. 80 bar
Hopper capacity	0.6 m³
S-tube	Ø200 × Ø180
Hydraulic pump	Rexroth-A11VLO190
Cycling system	Hydraulic with manual overrides
Max. aggregate size	40 mm

► Photos and drawings are for illustrative purpose only. / ► Right to make technical amendments reserved. / ► Both Rexroth and Kawasaki pump cell available. / ► Dimension will vary with different truck makes, models and specifications. / ► Maximum theoretical values listed.

Working Diagram





KCP27ZX120



Boom Specifications

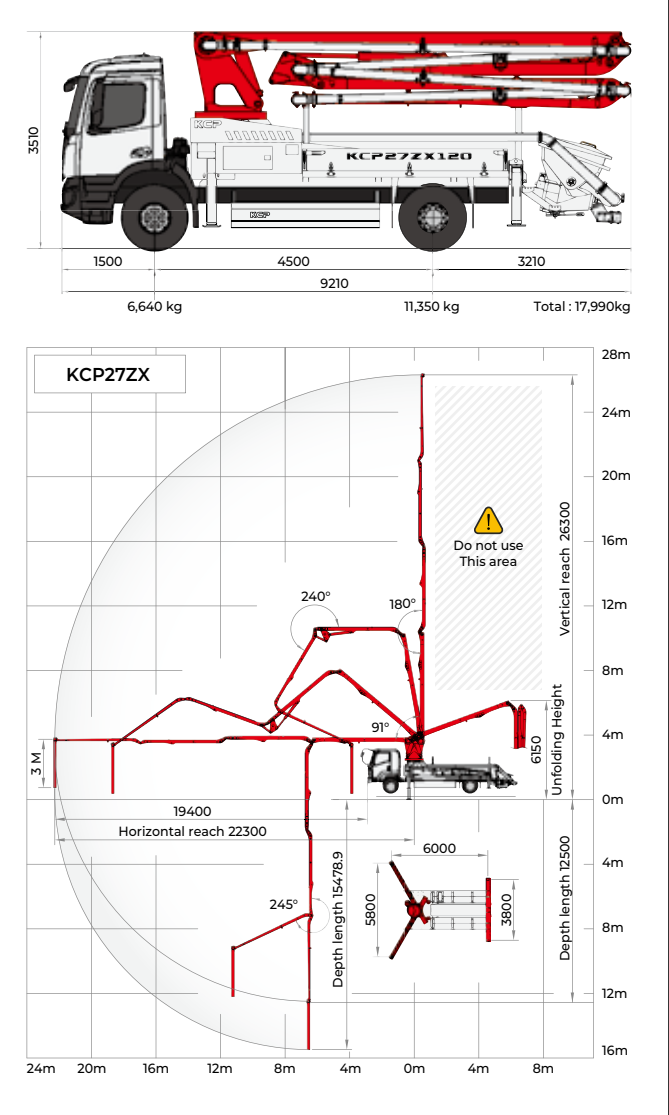
Vertical reach	26.3 m	
Horizontal reach	22.3 m	
Reach from front of truck	19.4 m	
Unfolding height	6.15 m	
Section articulation	91°/180°/240°/245°	
Rotation	370°	
Delivery line	125 mm	
Proportional boom	Yes	
End hose length	3 m	
Outrigger spread-front	5.8 m	X type
Outrigger spread-rear	3.8 m	T type
Max. outrigger weight	13,500 kg	

Pump Specifications

Maximum output	120 m³/h
Concrete cylinder	Ø230 × 1,400 mm
Stroke per minute	34
Concrete pressure	Max. 80 bar
Hopper capacity	0.6 m³
S-tube	Ø200 × Ø180
Hydraulic pump	Rexroth-A11VLO190
Cycling system	Hydraulic with manual overrides
Max. aggregate size	40 mm

► Photos and drawings are for illustrative purpose only. / ► Right to make technical amendments reserved. / ► Both Rexroth and Kawasaki pump cell available. / ► Dimension will vary with different truck makes, models and specifications. / ► Maximum theoretical values listed.

Working Diagram



KCP31ZX150



Boom Specifications

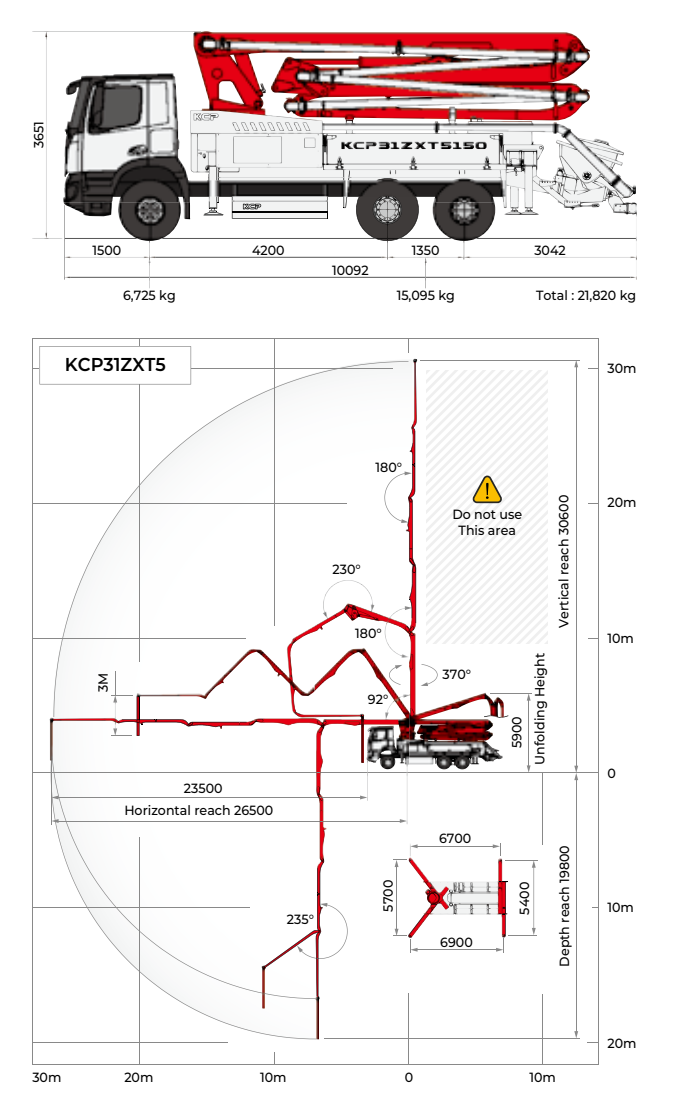
Vertical reach	30.6 m	
Horizontal reach	26.5 m	
Reach from front of truck	23.5 m	
Unfolding height	5.9 m	
Section articulation	92°/180°/230°/180°/235°	
Rotation	370°	
Delivery line	125 mm	
Proportional boom	Yes	
End hose length	3m	
Outrigger spread-front	5.7m	X type
Outrigger spread-rear	5.4m	T type
Max. outrigger weight	14,000 kg	

Pump Specifications

Maximum output	150 m³/h
Concrete cylinder	Ø230 × 1,800 mm
Stroke per minute	34
Concrete pressure	Max. 80 bar
Hopper capacity	0.6 m³
S-tube	Ø200 × Ø180
Hydraulic pump	Rexroth-A11VLO260
Cycling system	Hydraulic with manual overrides
Max. aggregate size	40 mm

► Photos and drawings are for illustrative purpose only. / ► Right to make technical amendments reserved. / ► Both Rexroth and Kawasaki pump cell available. / ► Dimension will vary with different truck makes, models and specifications. / ► Maximum theoretical values listed.

Working Diagram





KCP33RZ5170



Boom Specifications

Vertical reach	31.6 m	
Horizontal reach	27.7 m	
Reach from front of truck	24.8 m	
Unfolding height	5.8 m	
Section articulation	90°+70°/180°/240°/215°/235°	
Rotation	370°	
Delivery line	125 mm	
Proportional boom	Yes	
End hose length	3 m	
Outrigger spread-front	6.2 m	X type
Outrigger spread-rear	7.2 m	Swing type
Max. outrigger weight	22,500 kg	

Pump Specifications

Maximum output	170 m³/h
Concrete cylinder	Ø230 × 2,100 mm
Stroke per minute	33
Concrete pressure	Max. 95 bar
Hopper capacity	0.6 m³
S-tube	Ø200 × Ø180
Hydraulic pump	Rexroth-A11VLO190
Cycling system	Hydraulic with manual overrides
Max. aggregate size	40 mm

► Photos and drawings are for illustrative purpose only. / ► Right to make technical amendments reserved. / ► Both Rexroth and Kawasaki pump cell available. / ► Dimension will vary with different truck makes, models and specifications. / ► Maximum theoretical values listed.



KCP35ZX5150



Boom Specifications

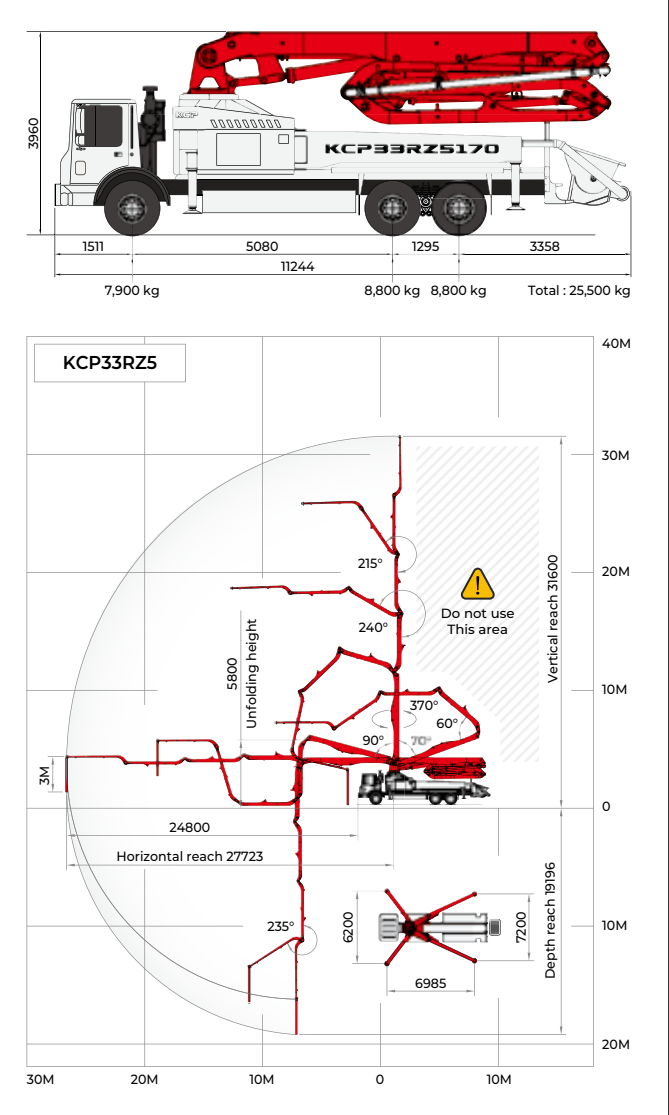
Vertical reach	34.7 m	
Horizontal reach	30.3 m	
Reach from front of truck	27.3 m	
Unfolding height	6.8 m	
Section articulation	92°/180°/225°/180°/245°	
Rotation	370°	
Delivery line	125 mm	
Proportional boom	Yes	
End hose length	3 m	
Outrigger spread-front	5.6 m	X type
Outrigger spread-rear	6.7 m	Swing type
Max. outrigger weight	16,000 kg	

Pump Specifications

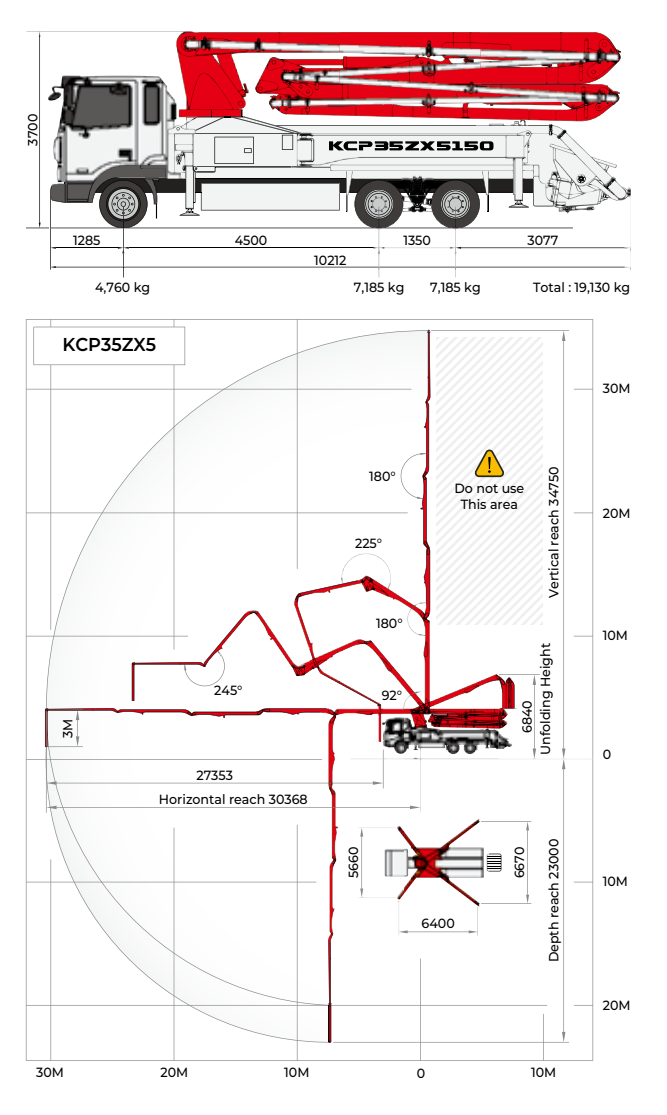
Maximum output	150 m³/h
Concrete cylinder	Ø230 × 2,100 mm
Stroke per minute	34
Concrete pressure	Max. 63 bar
Hopper capacity	0.6 m³
S-tube	Ø200 × Ø180
Hydraulic pump	Rexroth-A11VLO260
Cycling system	Hydraulic with manual overrides
Max. aggregate size	40 mm

► Photos and drawings are for illustrative purpose only. / ► Right to make technical amendments reserved. / ► Both Rexroth and Kawasaki pump cell available. / ► Dimension will vary with different truck makes, models and specifications. / ► Maximum theoretical values listed.

Working Diagram



Working Diagram





KCP37ZX5150



Boom Specifications

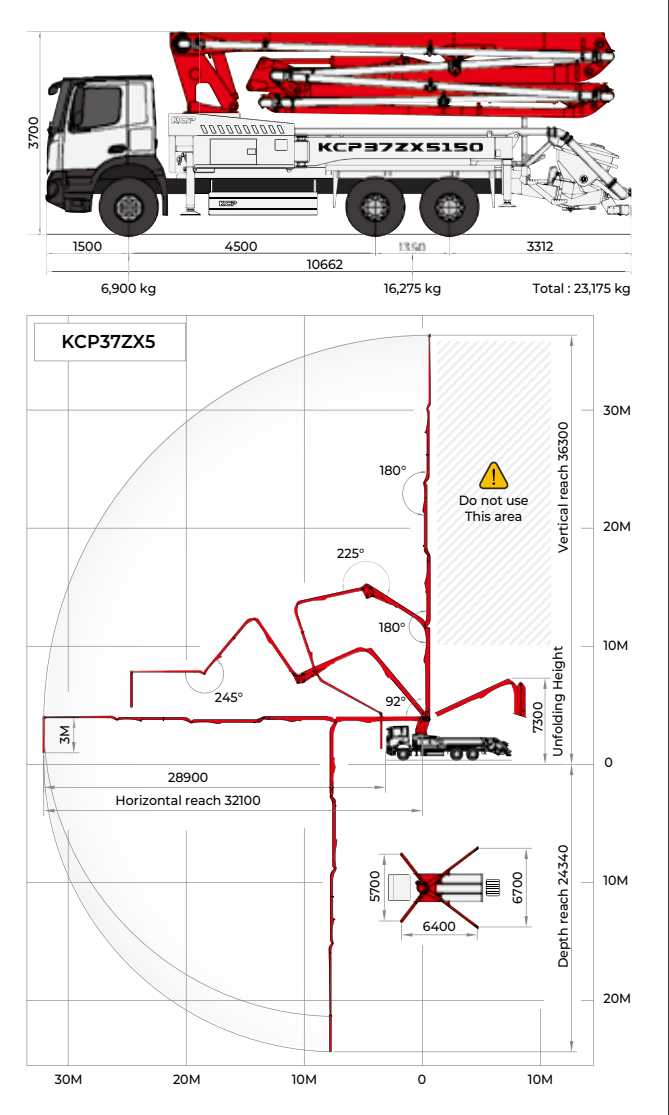
Vertical reach	36.3 m	
Horizontal reach	32.1 m	
Reach from front of truck	28.9 m	
Unfolding height	7.3 m	
Section articulation	92°/180°/225°/180°/245°	
Rotation	370°	
Delivery line	125 mm	
Proportional boom	Yes	
End hose length	3 m	
Outrigger spread-front	5.7 m	X type
Outrigger spread-rear	6.7 m	Swing type
Max. outrigger weight	17,500 kg	

Pump Specifications

Maximum output	150 m³/h
Concrete cylinder	Ø230 × 1,800 mm
Stroke per minute	34
Concrete pressure	Max. 80 bar
Hopper capacity	0.6 m³
S-tube	Ø200 × Ø180
Hydraulic pump	Rexroth-A11VLO260
Cycling system	Hydraulic with manual overrides
Max. aggregate size	40 mm

► Photos and drawings are for illustrative purpose only. / ► Right to make technical amendments reserved. / ► Both Rexroth and Kawasaki pump cell available. / ► Dimension will vary with different truck makes, models and specifications. / ► Maximum theoretical values listed.

Working Diagram



KCP38ZX4170



Boom Specifications

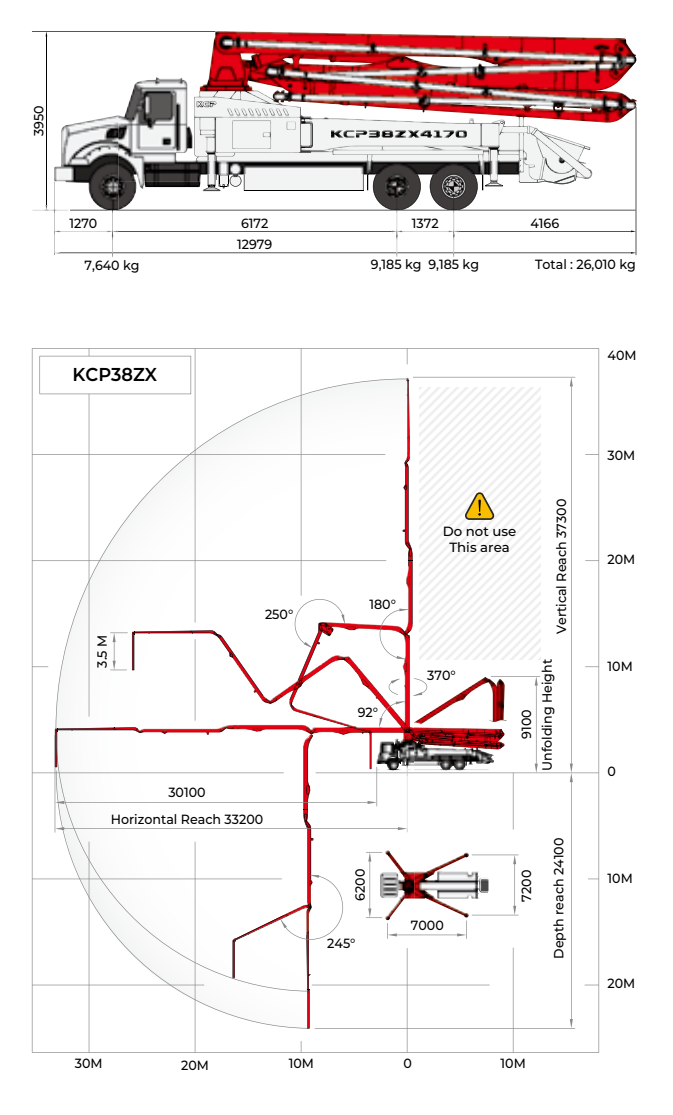
Vertical reach	37.3 m	
Horizontal reach	33.2 m	
Reach from front of truck	30.1 m	
Unfolding height	9.1 m	
Section articulation	92°/180°/250°/245°	
Rotation	370°	
Delivery line	125 mm	
Proportional boom	Yes	
End hose length	3.5 m	
Outrigger spread-front	6.2 m	X type
Outrigger spread-rear	7.2 m	Swing type
Max. outrigger weight	23,500 kg	

Pump Specifications

Maximum output	170 m³/h
Concrete cylinder	Ø230 × 1,800 mm
Stroke per minute	33
Concrete pressure	Max. 95 bar
Hopper capacity	0.6 m³
S-tube	Ø200 × Ø180
Hydraulic pump	Rexroth-A20VLO190
Cycling system	Hydraulic with manual overrides
Max. aggregate size	40 mm

► Photos and drawings are for illustrative purpose only. / ► Right to make technical amendments reserved. / ► Both Rexroth and Kawasaki pump cell available. / ► Dimension will vary with different truck makes, models and specifications. / ► Maximum theoretical values listed.

Working Diagram





KCP40ZX5170



Boom Specifications

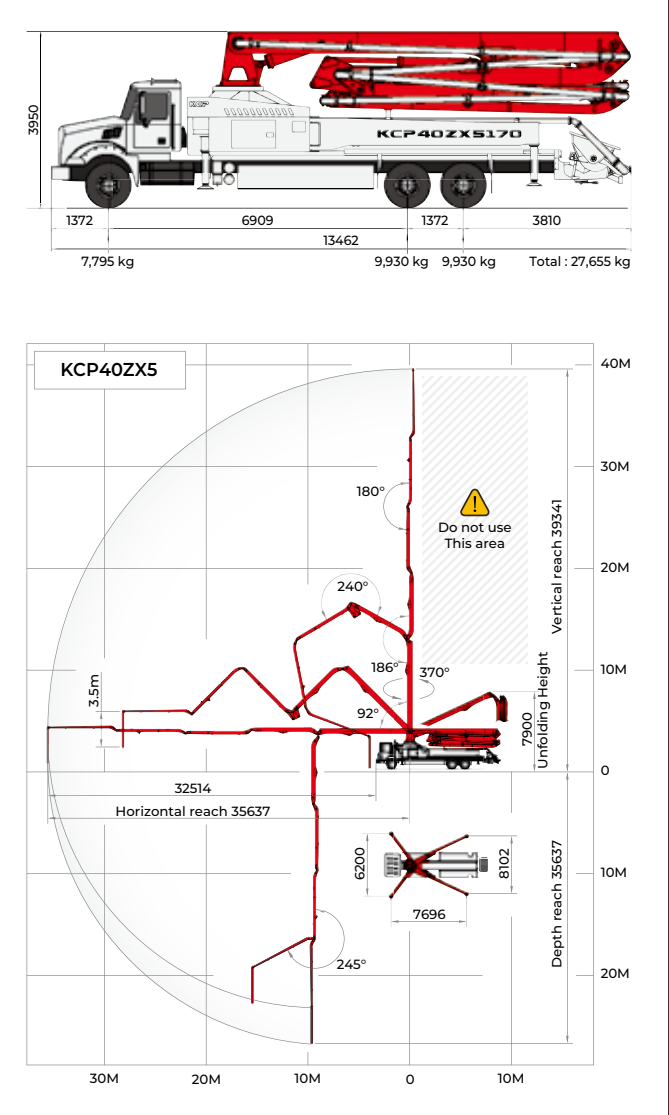
Vertical reach	39.3 m	
Horizontal reach	35.6 m	
Reach from front of truck	32.5 m	
Unfolding height	7.9 m	
Section articulation	92°/186°/240°/180°/245°	
Rotation	370°	
Delivery line	125 mm	
Proportional boom	Yes	
End hose length	3.5 m	
Outrigger spread-front	6.2 m	X type
Outrigger spread-rear	8.1 m	Swing type
Max.outrigger weight	25,000 kg	

Pump Specifications

Maximum output	170 m³/h
Concrete cylinder	Ø230 × 2,100 mm
Stroke per minute	33
Concrete pressure	Max. 85 bar
Hopper capacity	0.6 m³
S-tube	Ø200 × Ø180
Hydraulic pump	Rexroth-A20VLO190
Cycling system	Hydraulic with manual overrides
Max. aggregate size	40 mm

► Photos and drawings are for illustrative purpose only. / ► Right to make technical amendments reserved. / ► Both Rexroth and Kawasaki pump cell available. / ► Dimension will vary with different truck makes, models and specifications. / ► Maximum theoretical values listed.

Working Diagram



KCP41ZX5170



Boom Specifications

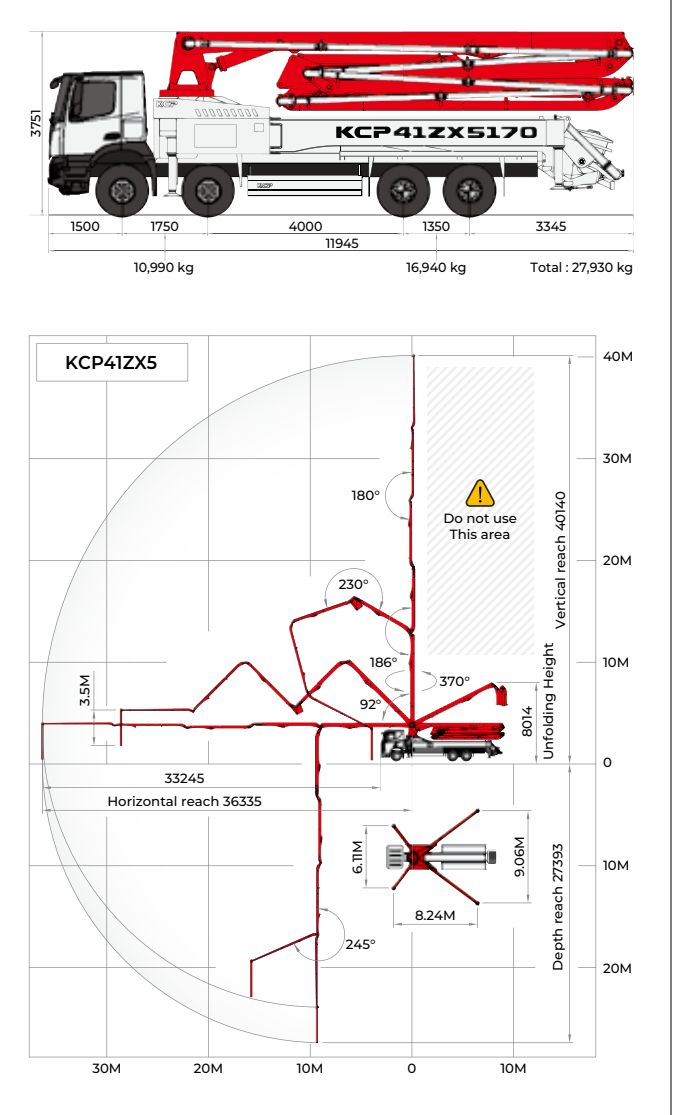
Vertical reach	40.1 m	
Horizontal reach	36.3 m	
Reach from front of truck	33.2 m	
Unfolding height	8 m	
Section articulation	92°/186°/230°/180°/245°	
Rotation	370°	
Delivery line	125 mm	
Proportional boom	Yes	
End hose length	3.5 m	
Outrigger spread-front	6.1 m	X type
Outrigger spread-rear	9 m	Swing type
Max.outrigger weight	25,000 kg	

Pump Specifications

Maximum output	170 m³/h
Concrete cylinder	Ø230 × 2,100 mm
Stroke per minute	33
Concrete pressure	Max. 85 bar
Hopper capacity	0.6 m³
S-tube	Ø200 × Ø180
Hydraulic pump	Rexroth-A20VLO190
Cycling system	Hydraulic with manual overrides
Max. aggregate size	40 mm

► Photos and drawings are for illustrative purpose only. / ► Right to make technical amendments reserved. / ► Both Rexroth and Kawasaki pump cell available. / ► Dimension will vary with different truck makes, models and specifications. / ► Maximum theoretical values listed.

Working Diagram





KCP 43ZX5170



Boom Specifications

Vertical reach	42.2 m	
Horizontal reach	37.2 m	
Reach from front of truck	33.8 m	
Unfolding height	9.1 m	
Section articulation	91°/180°/235°/180°/210°	
Rotation	370°	
Delivery line	125 mm	
Proportional boom	Yes	
End hose length	3.5 m	
Outrigger spread-front	6.2 m	X type
Outrigger spread-rear	9.1 m	Swing type
Max.outrigger weight	26,000 kg	

Pump Specifications

Maximum output	170 m³/h
Concrete cylinder	Ø230 × 2,100 mm
Stroke per minute	33
Concrete pressure	Max. 85 bar
Hopper capacity	0.6 m³
S-tube	Ø200 × Ø180
Hydraulic pump	Rexroth-A20VLO190
Cycling system	Hydraulic with manual overrides
Max. aggregate size	40 mm

► Photos and drawings are for illustrative purpose only. / ► Right to make technical amendments reserved. / ► Both Rexroth and Kawasaki pump cell available. / ► Dimension will vary with different truck makes, models and specifications. / ► Maximum theoretical values listed.



KCP 46ZX5170



Boom Specifications

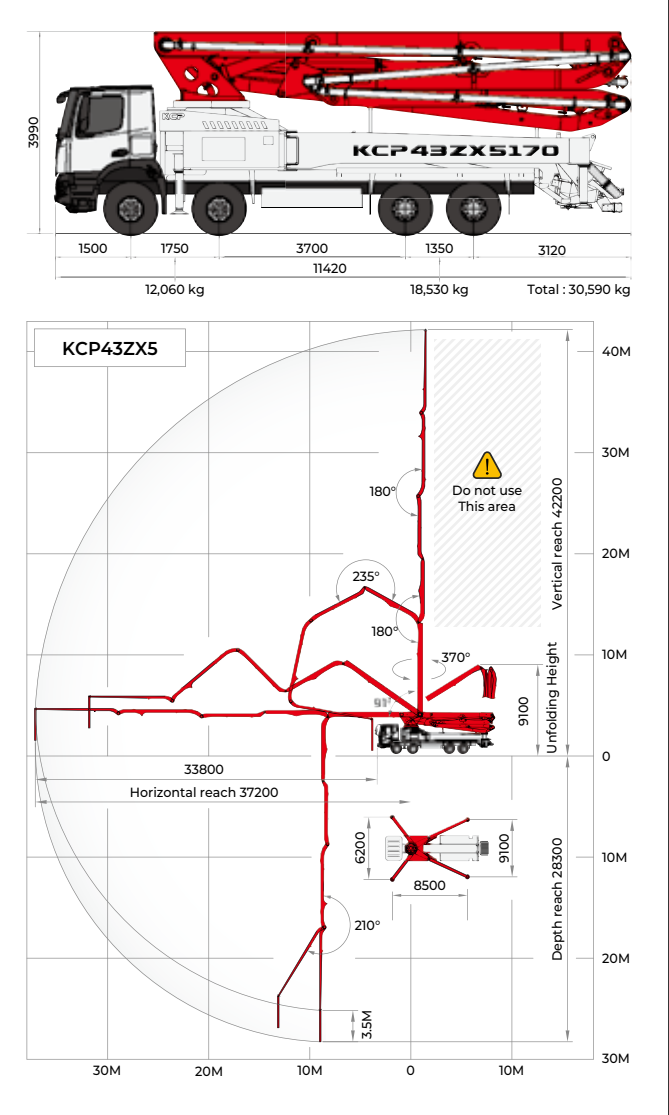
Vertical reach	45.1 m	
Horizontal reach	40 m	
Reach from front of truck	36.8 m	
Unfolding height	9.2 m	
Section articulation	92°/180°/225°/180°/210°	
Rotation	370°	
Delivery line	125 mm	
Proportional boom	Yes	
End hose length	3.5 m	
Outrigger spread-front	8.9 m	X type
Outrigger spread-rear	9.5 m	Swing type
Max.outrigger weight	29000 kg	

Pump Specifications

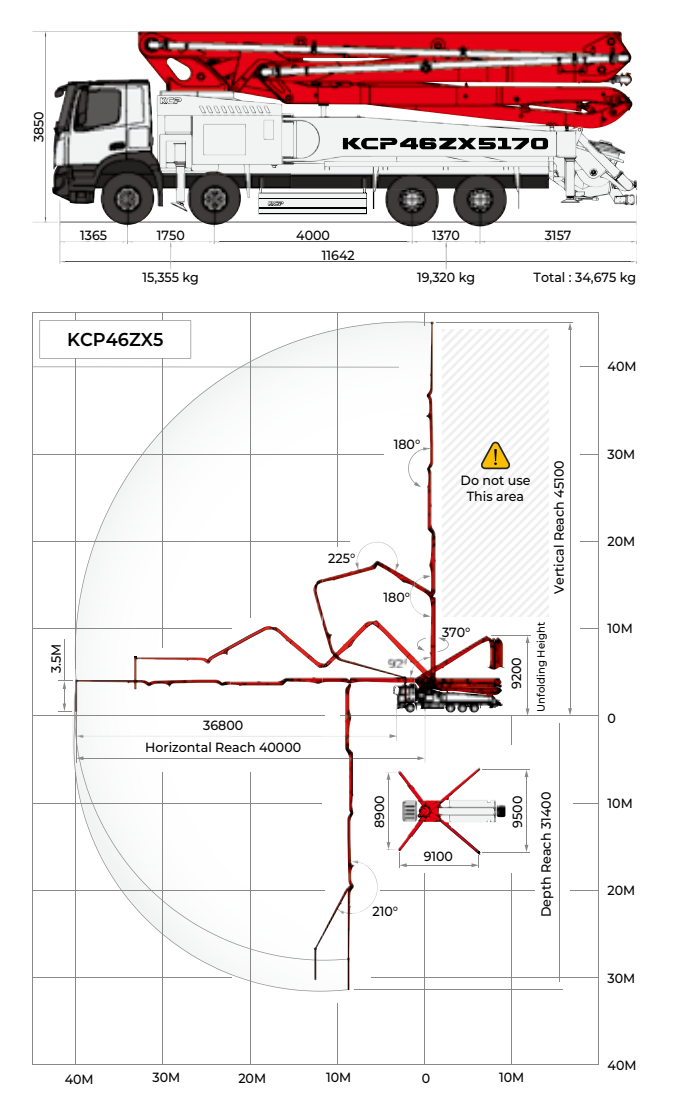
Maximum output	170 m³/h
Concrete cylinder	Ø230 × 2,100 mm
Stroke per minute	33
Concrete pressure	Max. 85 bar
Hopper capacity	0.6 m³
S-tube	Ø200 × Ø180
Hydraulic pump	Rexroth-A20VLO190
Cycling system	Hydraulic with manual overrides
Max. aggregate size	40 mm

► Photos and drawings are for illustrative purpose only. / ► Right to make technical amendments reserved. / ► Both Rexroth and Kawasaki pump cell available. / ► Dimension will vary with different truck makes, models and specifications. / ► Maximum theoretical values listed.

Working Diagram



Working Diagram





KCP48ZX5170



Boom Specifications

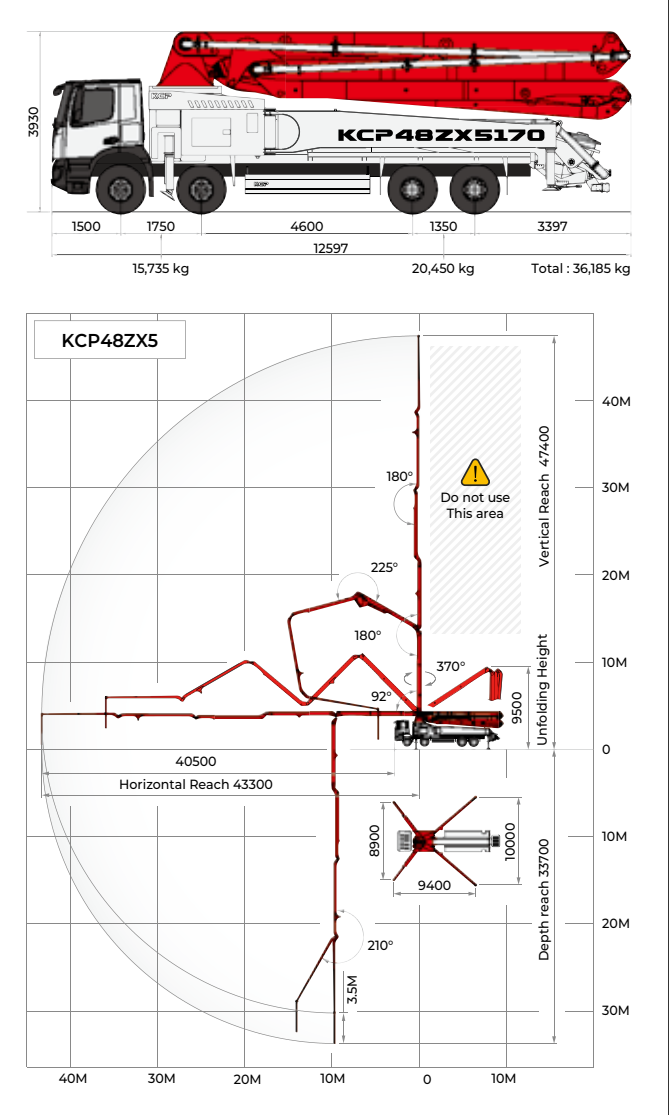
Vertical reach	47.4 m	
Horizontal reach	43.3 m	
Reach from front of truck	40.5 m	
Unfolding height	9.5 m	
Section articulation	92°/180°/225°/180°/210°	
Rotation	370°	
Delivery line	125 mm	
Proportional boom	Yes	
End hose length	3.5 m	
Outrigger spread-front	8.9 m	X type
Outrigger spread-rear	10 m	Swing type
Max.outrigger weight	32000 kg	

Pump Specifications

Maximum output	170 m³/h
Concrete cylinder	Ø230 × 2,100 mm
Stroke per minute	33
Concrete pressure	Max. 85 bar
Hopper capacity	0.6 m³
S-tube	Ø200 × Ø180
Hydraulic pump	Rexroth-A20VLO190
Cycling system	Hydraulic with manual overrides
Max. aggregate size	40 mm

► Photos and drawings are for illustrative purpose only. / ► Right to make technical amendments reserved. / ► Both Rexroth and Kawasaki pump cell available. / ► Dimension will vary with different truck makes, models and specifications. / ► Maximum theoretical values listed.

Working Diagram



KCP52ZX6170



Boom Specifications

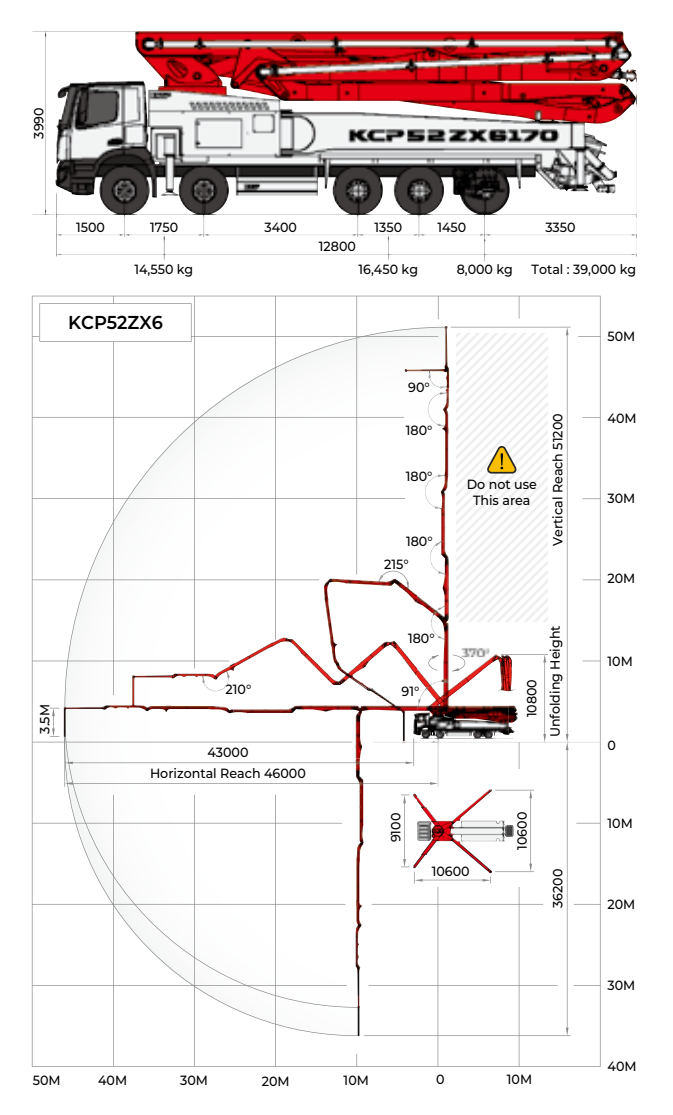
Vertical reach	51.2 m	
Horizontal reach	46 m	
Reach from front of truck	43 m	
Unfolding height	10.8 m	
Section articulation	91°/180°/215°/180°/210°/90°	
Rotation	370°	
Delivery line	125 mm	
Proportional boom	Yes	
End hose length	3.5 m	
Outrigger spread-front	9.1 m	X type
Outrigger spread-rear	10.6 m	Swing type
Max.outrigger weight	38000 kg	

Pump Specifications

Maximum output	170 m³/h
Concrete cylinder	Ø230 × 2,100 mm
Stroke per minute	33
Concrete pressure	Max. 85 bar
Hopper capacity	0.6 m³
S-tube	Ø200 × Ø180
Hydraulic pump	Rexroth-A20VLO190
Cycling system	Hydraulic with manual overrides
Max. aggregate size	40 mm

► Photos and drawings are for illustrative purpose only. / ► Right to make technical amendments reserved. / ► Both Rexroth and Kawasaki pump cell available. / ► Dimension will vary with different truck makes, models and specifications. / ► Maximum theoretical values listed.

Working Diagram





KCP56ZX6170



Boom Specifications

Vertical reach	55.3 m	
Horizontal reach	50.1 m	
Reach from front of truck	47.1 m	
Unfolding height	12.4 m	
Section articulation	91°/180°/225°/180°/210°/90°	
Rotation	370°	
Delivery line	125 mm	
Proportional boom	Yes	
End hose length	3.5 m	
Outrigger spread-front	9.1 m	X type
Outrigger spread-rear	12.9 m	Swing type
Max.outrigger weight	40,000 kg	

Pump Specifications

Maximum output	170 m³/h
Concrete cylinder	Ø230 × 2,100 mm
Stroke per minute	33
Concrete pressure	Max. 85 bar
Hopper capacity	0.6 m³
S-tube	Ø200 × Ø180
Hydraulic pump	Rexroth-A20VLO190
Cycling system	Hydraulic with manual overrides
Max. aggregate size	40 mm

► Photos and drawings are for illustrative purpose only. / ► Right to make technical amendments reserved. / ► Both Rexroth and Kawasaki pump cell available. / ► Dimension will vary with different truck makes, models and specifications. / ► Maximum theoretical values listed.



KCP61ZX6170



Boom Specifications

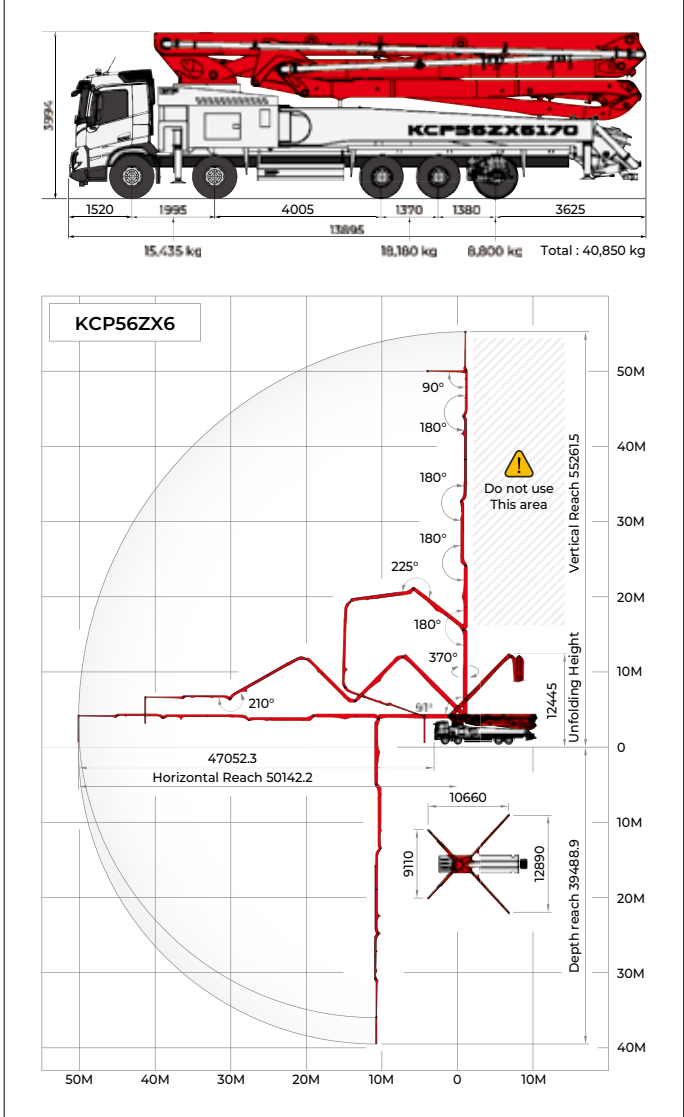
Vertical reach	60.3 m	
Horizontal reach	55.1 m	
Reach from front of truck	51.6 m	
Unfolding height	13.6 m	
Section articulation	92°/180°/210°/180°/210°/90°	
Rotation	370°	
Delivery line	125 mm	
Proportional boom	Yes	
End hose length	3.5 m	
Outrigger spread-front	10.4 m	X type
Outrigger spread-rear	13.2 m	Swing type
Max.outrigger weight	42500 kg	

Pump Specifications

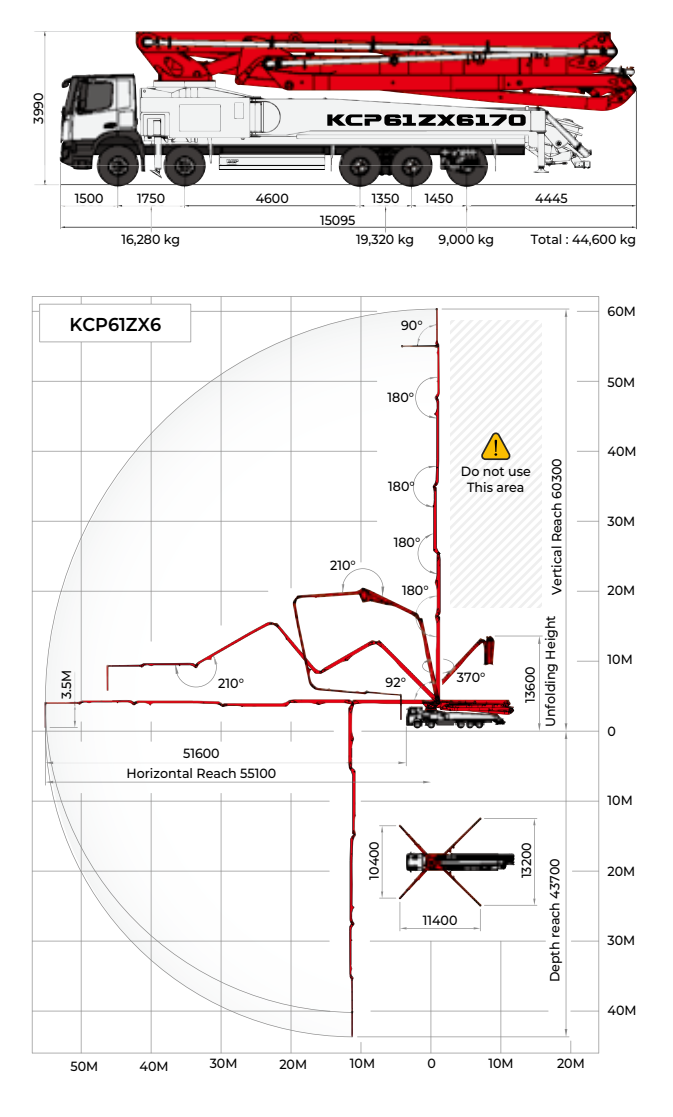
Maximum output	170 m³/h
Concrete cylinder	Ø230 × 2,100 mm
Stroke per minute	33
Concrete pressure	Max. 85 bar
Hopper capacity	0.6 m³
S-tube	Ø200 × Ø180
Hydraulic pump	Rexroth-A20VLO190
Cycling system	Hydraulic with manual overrides
Max. aggregate size	40 mm

► Photos and drawings are for illustrative purpose only. / ► Right to make technical amendments reserved. / ► Both Rexroth and Kawasaki pump cell available. / ► Dimension will vary with different truck makes, models and specifications. / ► Maximum theoretical values listed.

Working Diagram



Working Diagram





KCP63ZS6170



Boom Specifications

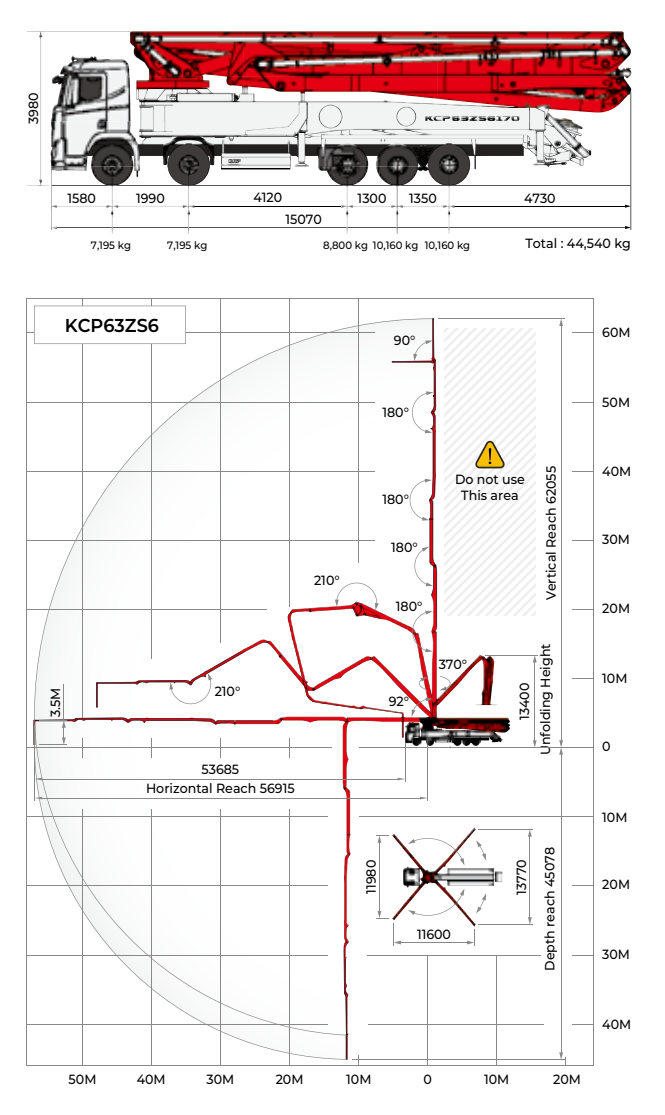
Vertical reach	62 m	
Horizontal reach	56.9 m	
Reach from front of truck	53.7 m	
Unfolding height	13.4 m	
Section articulation	92°/180°/210°/180°/210°/90°	
Rotation	370°	
Delivery line	125 mm	
Proportional boom	Yes	
End hose length	3.5 m	
Outrigger spread-front	12 m	Swing type
Outrigger spread-rear	13.8 m	Swing type
Max.outrigger weight	42,000 kg	

Pump Specifications

Maximum output	170 m³/h
Concrete cylinder	Ø230 × 2,100 mm
Stroke per minute	33
Concrete pressure	Max. 87 bar
Hopper capacity	0.6 m³
S-tube	Ø200 × Ø180
Hydraulic pump	Rexroth-A20VLO190
Cycling system	Hydraulic with manual overrides
Max. aggregate size	40 mm

► Photos and drawings are for illustrative purpose only. / ► Right to make technical amendments reserved. / ► Both Rexroth and Kawasaki pump cell available. / ► Dimension will vary with different truck makes, models and specifications. / ► Maximum theoretical values listed.

Working Diagram



KCP65ZS6170



Boom Specifications

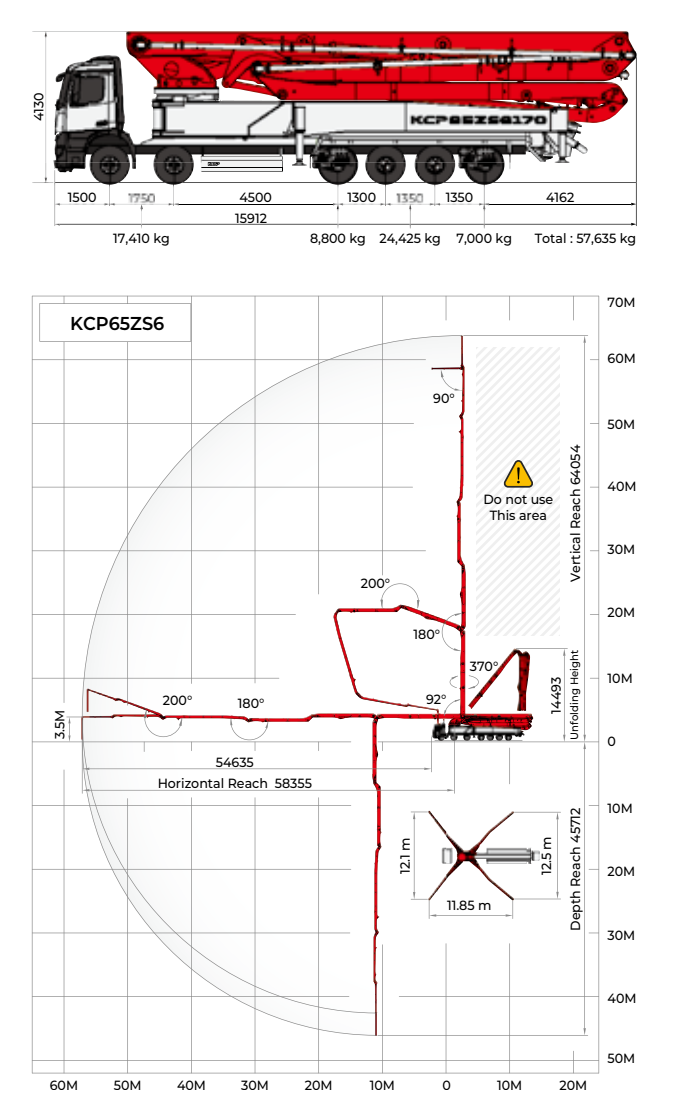
Vertical reach	64 m	
Horizontal reach	58.3 m	
Reach from front of truck	54.6 m	
Unfolding height	14.4 m	
Section articulation	92°/180°/210°/180°/210°/90°	
Rotation	370°	
Delivery line	125 mm	
Proportional boom	Yes	
End hose length	3.5 m	
Outrigger spread-front	12.1 m	Swing type
Outrigger spread-rear	12.5 m	Swing type
Max.outrigger weight	50,000 kg	

Pump Specifications

Maximum output	170 m³/h
Concrete cylinder	Ø230 × 2,100 mm
Stroke per minute	33
Concrete pressure	Max. 87 bar
Hopper capacity	0.6 m³
S-tube	Ø200 × Ø180
Hydraulic pump	Rexroth-A20VLO190
Cycling system	Hydraulic with manual overrides
Max. aggregate size	40 mm

► Photos and drawings are for illustrative purpose only. / ► Right to make technical amendments reserved. / ► Both Rexroth and Kawasaki pump cell available. / ► Dimension will vary with different truck makes, models and specifications. / ► Maximum theoretical values listed.

Working Diagram





KCP70ZS6170



Boom Specifications

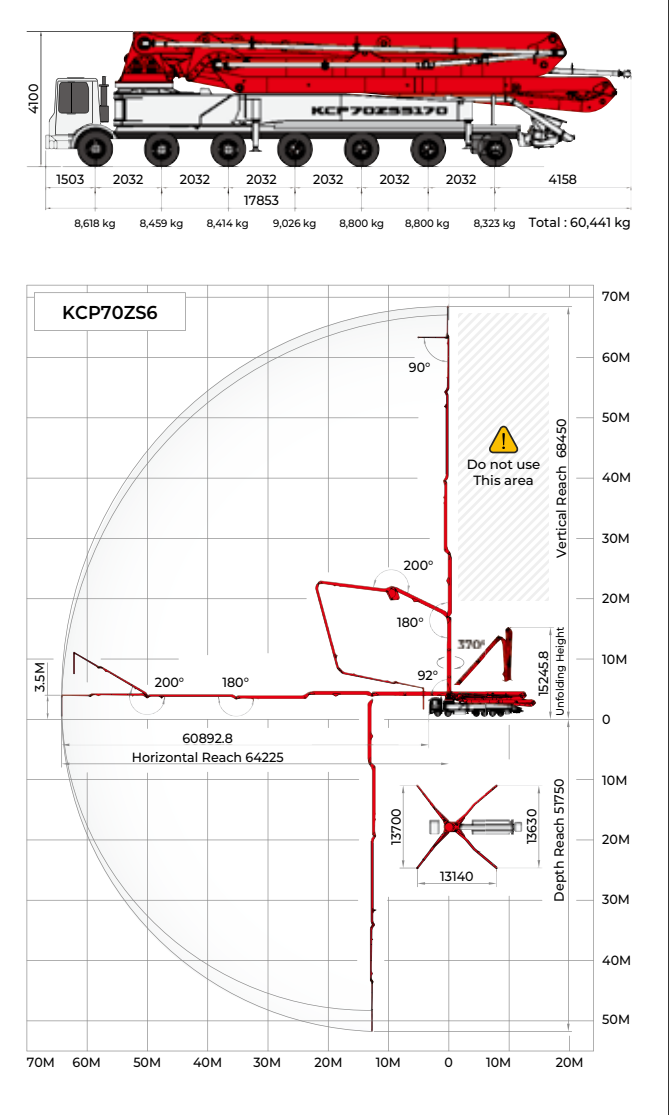
Vertical reach	68.4 m	
Horizontal reach	64.2 m	
Reach from front of truck	60.8 m	
Unfolding height	15.2 m	
Section articulation	92°/180°/200°/180°/200°/90°	
Rotation	370°	
Delivery line	125 mm	
Proportional boom	Yes	
End hose length	3.5 m	
Outrigger spread-front	13.7 m	Swing type
Outrigger spread-rear	13.6 m	Swing type
Max.outrigger weight	55,000 kg	

Pump Specifications

Maximum output	170 m³/h
Concrete cylinder	Ø230 × 2,100 mm
Stroke per minute	32
Concrete pressure	Max. 110 bar
Hopper capacity	0.6 m³
S-tube	Ø200 × Ø180
Hydraulic pump	Rexroth-A20VLO190
Cycling system	Hydraulic with manual overrides
Max. aggregate size	40 mm

► Photos and drawings are for illustrative purpose only. / ► Right to make technical amendments reserved. / ► Both Rexroth and Kawasaki pump cell available. / ► Dimension will vary with different truck makes, models and specifications. / ► Maximum theoretical values listed.

Working Diagram



KCP75ZS6170



Boom Specifications

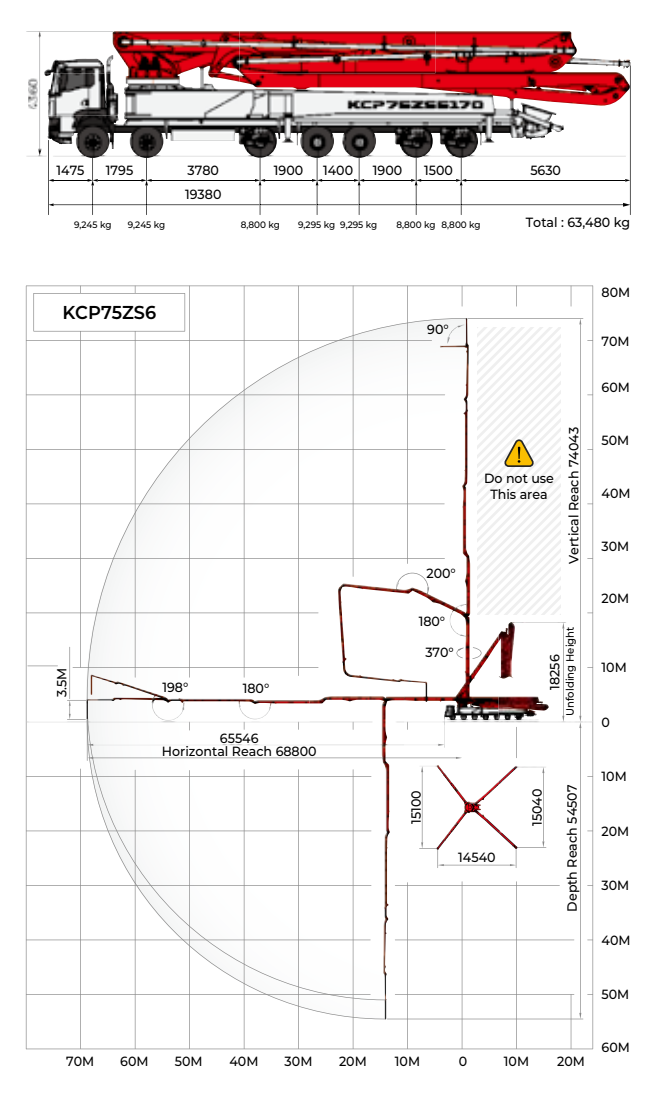
Vertical reach	74 m	
Horizontal reach	68.8 m	
Reach from front of truck	65.5 m	
Unfolding height	18.2 m	
Section articulation	92°/180°/200°/180°/198°/90°	
Rotation	370°	
Delivery line	125 mm	
Proportional boom	Yes	
End hose length	3.5 m	
Outrigger spread-front	15.1 m	Swing type
Outrigger spread-rear	15 m	Swing type
Max.outrigger weight	57000 kg	

Pump Specifications

Maximum output	170 m³/h
Concrete cylinder	Ø230 × 2,100 mm
Stroke per minute	33
Concrete pressure	Max. 85 bar
Hopper capacity	0.6 m³
S-tube	Ø200 × Ø180
Hydraulic pump	Rexroth-A20VLO190
Cycling system	Hydraulic with manual overrides
Max. aggregate size	40 mm

► Photos and drawings are for illustrative purpose only. / ► Right to make technical amendments reserved. / ► Both Rexroth and Kawasaki pump cell available. / ► Dimension will vary with different truck makes, models and specifications. / ► Maximum theoretical values listed.

Working Diagram



KCP CONCRETE PUMPS STATIONARY PUMPS

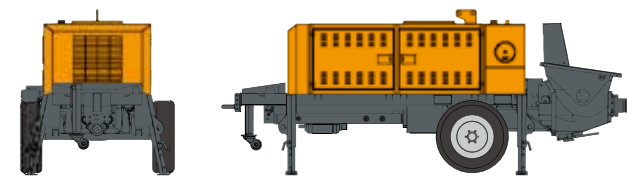




TRAILER PUMPS

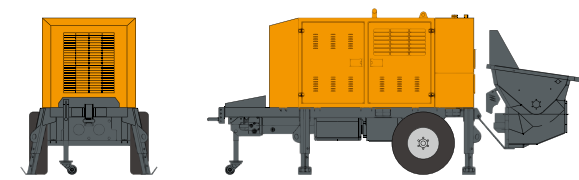
KTP 0705

Maximum Output	52 m³/h
Concrete Pressure	70 bar
Vertical distance	100 m
Horizontal distance	175 m
Weight	2,980 kg



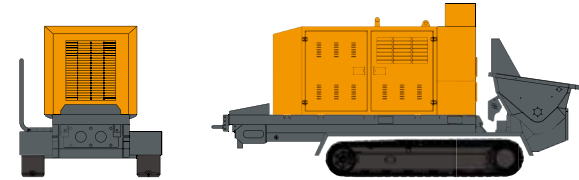
KTP 0706

Maximum Output	70 m³/h
Concrete Pressure	70 bar
Vertical distance	100 m
Horizontal distance	175 m
Weight	3,900 kg



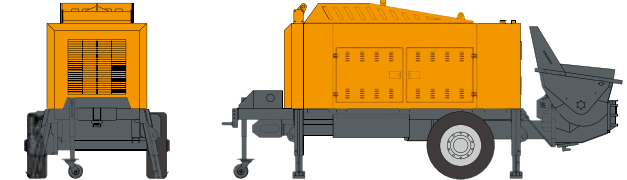
KTP 0706 T

Maximum Output	70 m³/h
Concrete Pressure	70 bar
Vertical distance	100 m
Horizontal distance	175 m
Weight	4,900 kg



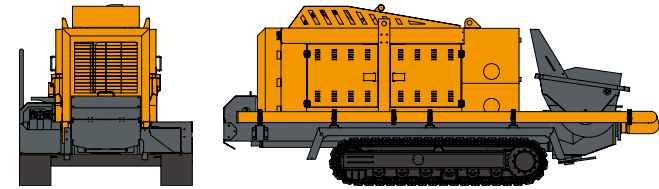
KTP 1310

Maximum Output	64 m³/h	84 m³/h
Concrete Pressure	126 bar	95 bar
Vertical distance	180 m	135 m
Horizontal distance	315 m	235 m
Weight	5,380 kg	5,380 kg



KTP 1310 T

Maximum Output	64 m³/h	84 m³/h
Concrete Pressure	126 bar	95 bar
Vertical distance	180 m	135 m
Horizontal distance	315 m	235 m
Weight	7,260 Kg	7,260 Kg



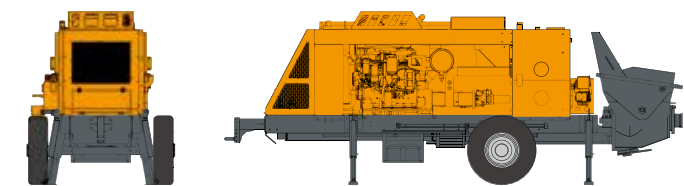
► Photos and drawings are for illustrative purpose only. / ► Right to make technical amendments reserved. / ► Both Rexroth and Kawasaki pump cell available. / ► Dimension will vary with different truck makes, models and specifications. / ► Maximum theoretical values listed.



TRAILER PUMPS

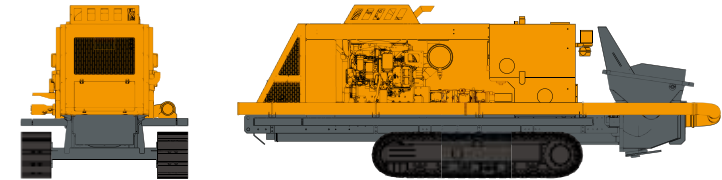
KTP 1714

Maximum Output	88 m³/h	116 m³/h
Concrete Pressure	172 bar	130 bar
Vertical distance	245 m	185 m
Horizontal distance	430 m	325 m
Weight	7,000 kg	7,000 kg



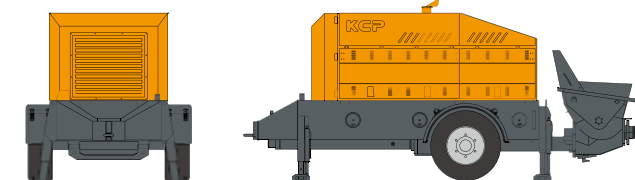
KTP 1714 T

Maximum Output	88 m³/h	116 m³/h
Concrete Pressure	172 bar	130 bar
Vertical distance	245 m	185 m
Horizontal distance	430 m	325 m
Weight	7,850 kg	7,850 kg



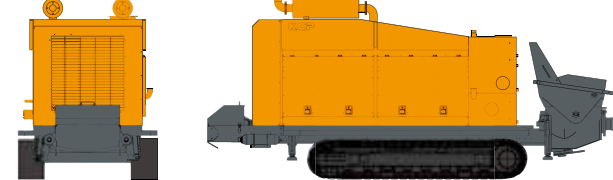
KTP 2210

Maximum Output	105 m³/h
Concrete Pressure	224 bar
Vertical distance	315 m
Horizontal distance	550 m
Weight	7,540 kg



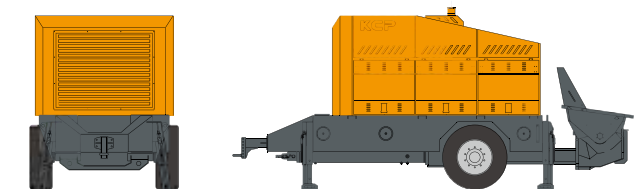
KTP 2210 T

Maximum Output	105 m³/h
Concrete Pressure	224 bar
Vertical distance	315 m
Horizontal distance	550 m
Weight	8,700 kg



KTP 2812

Maximum Output	78 m³/h
Concrete Pressure	285 bar
Vertical distance	405 m
Horizontal distance	710 m
Weight	10,500 kg



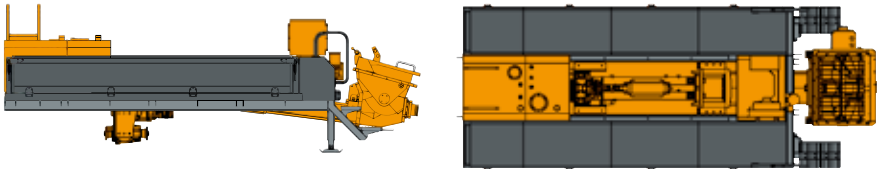
► Photos and drawings are for illustrative purpose only. / ► Right to make technical amendments reserved. / ► Both Rexroth and Kawasaki pump cell available. / ► Dimension will vary with different truck makes, models and specifications. / ► Maximum theoretical values listed.



LINE PUMPS

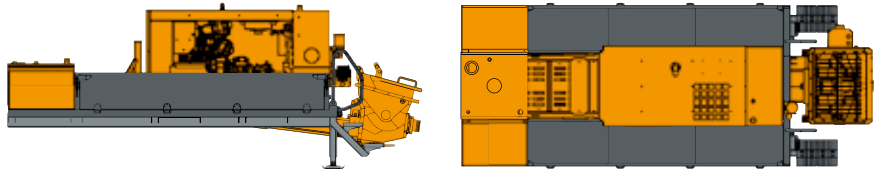
KML 0706 P.T.O.

Maximum Output	63 m³/h
Concrete Pressure	87 bar
Vertical distance	125 m
Horizontal distance	215 m
Weight	3,360 kg



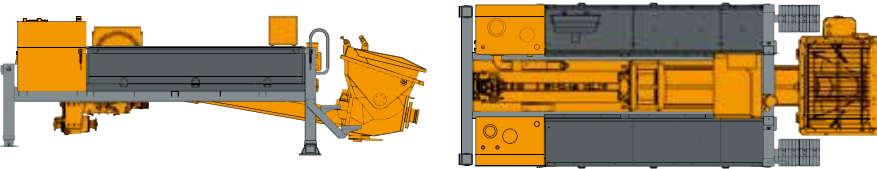
KML 0706 ENGINE

Maximum Output	63 m³/h
Concrete Pressure	87 bar
Vertical distance	125 m
Horizontal distance	215 m
Weight	4,220 kg



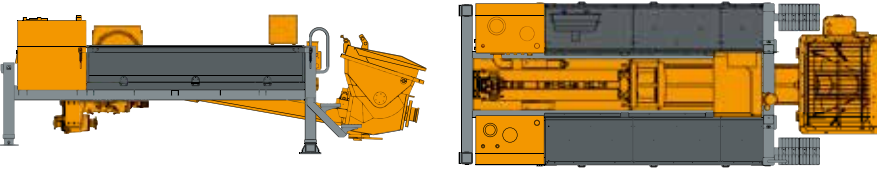
KML 1310

Maximum Output	64 m³/h
Concrete Pressure	126 bar
Vertical distance	180 m
Horizontal distance	315 m
Weight	5,280 kg



KML 1714

Maximum Output	95 m³/h
Concrete Pressure	172 bar
Vertical distance	245 m
Horizontal distance	430 m
Weight	5,380 kg



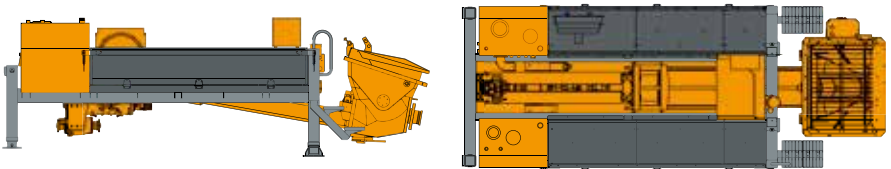
► Photos and drawings are for illustrative purpose only. / ► Right to make technical amendments reserved. / ► Both Rexroth and Kawasaki pump cell available. / ► Dimension will vary with different truck makes, models and specifications. / ► Maximum theoretical values listed.



LINE PUMPS

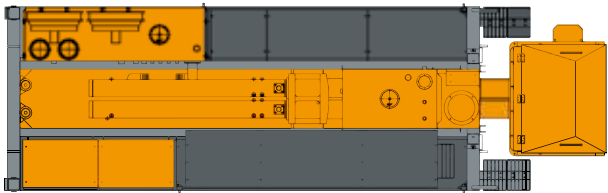
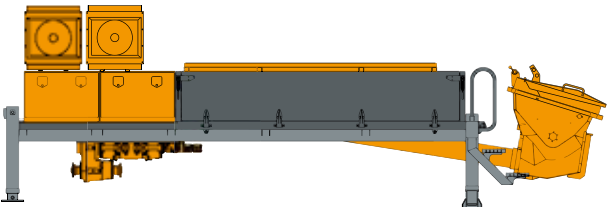
KML 2210

Maximum Output	68 m³/h
Concrete Pressure	224 bar
Vertical distance	240 m
Horizontal distance	425 m
Weight	5,260 kg



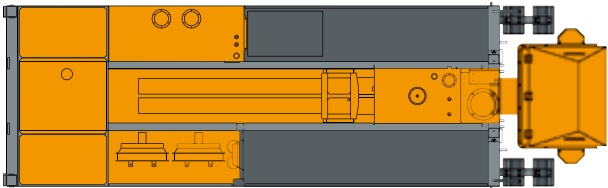
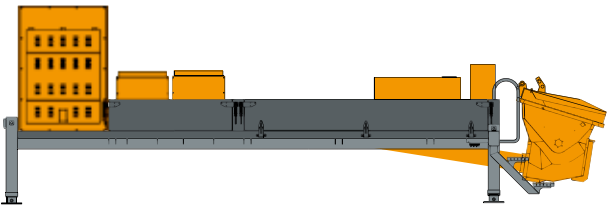
KML 2812 P.T.O.

Maximum Output	75 m³/h
Concrete Pressure	285 bar
Vertical distance	405 m
Horizontal distance	710 m
Weight	6,500 kg



KML 2812 ENGINE

Maximum Output	112 m³/h
Concrete Pressure	285 bar
Vertical distance	405 m
Horizontal distance	710 m
Engine/HP	CAT-C7.1 / 300HP
Weight	6,700 kg



► Photos and drawings are for illustrative purpose only. / ► Right to make technical amendments reserved. / ► Both Rexroth and Kawasaki pump cell available. / ► Dimension will vary with different truck makes, models and specifications. / ► Maximum theoretical values listed.

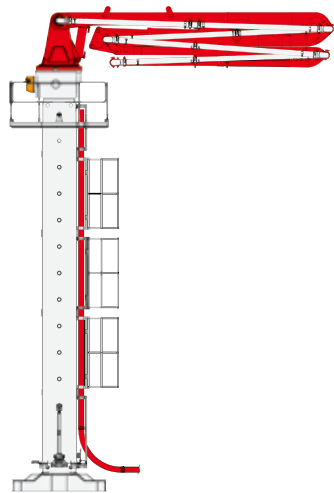
KCP CONCRETE PUMPS PLACING BOOMS





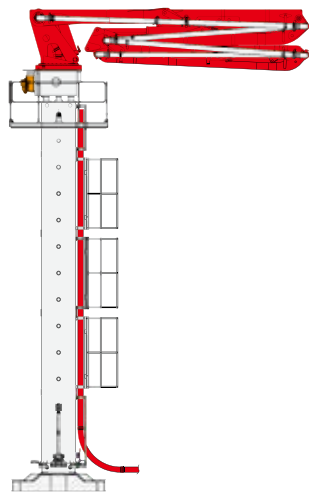
PLACING BOOMS

KB-M24Z



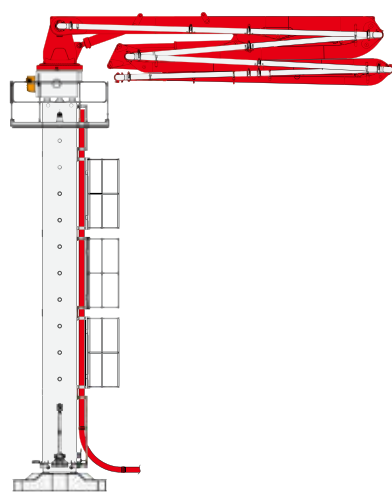
Boom type	4 Section Z type
Horizontal reach	23.2 m
Depth reach	19.9 m
Delivery line	125 mm
End hose length	3 m

KB-M27Z



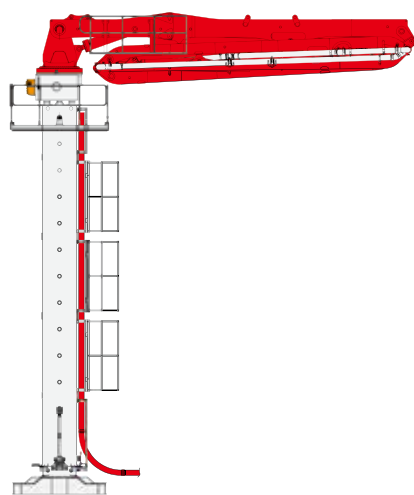
Boom type	5 Section R, Z type
Horizontal reach	26.3 m
Depth reach	23.5 m
Delivery line	125 mm
End hose length	3 m

KB-M28Z



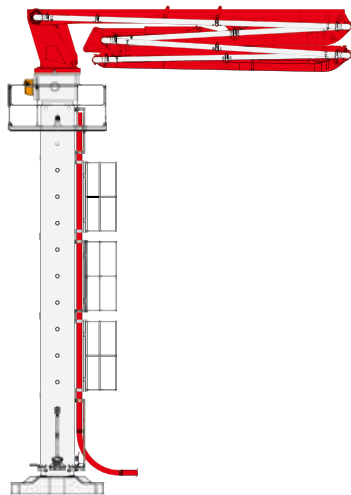
Boom type	4 Section Z type
Horizontal reach	27.6 m
Depth reach	23.1 m
Delivery line	125 mm
End hose length	3 m

KB-M32R



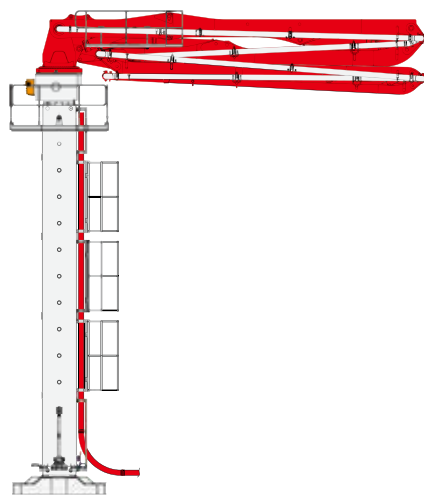
Boom type	4 Section R type
Horizontal reach	32.2 m
Depth reach	27.5 m
Delivery line	125 mm
End hose length	3.5 m

KB-M33Z



Boom type	5 Section R, Z type
Horizontal reach	32.1 m
Depth reach	28.1 m
Delivery line	125 mm
End hose length	3.5 m

KB-M34Z



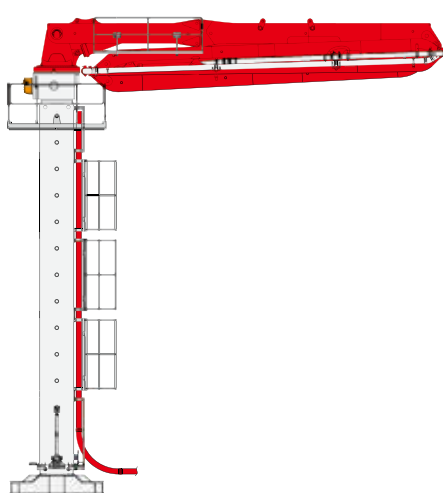
Boom type	4 Section Z type
Horizontal reach	33.1 m
Depth reach	28.1 m
Delivery line	125 mm
End hose length	3.5 m

► Photos and drawings are for illustrative purpose only. / ► Right to make technical amendments reserved. / ► Both Rexroth and Kawasaki pump cell available. / ► Dimension will vary with different truck makes, models and specifications. / ► Maximum theoretical values listed.



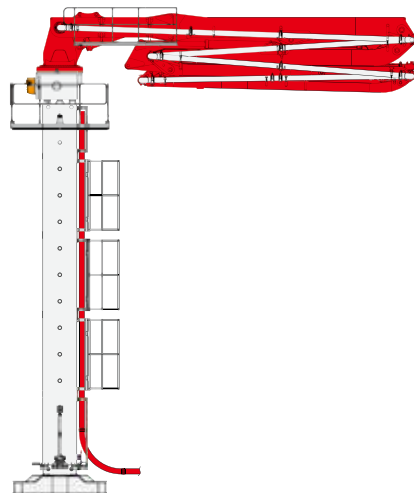
PLACING BOOMS

KB-M36R



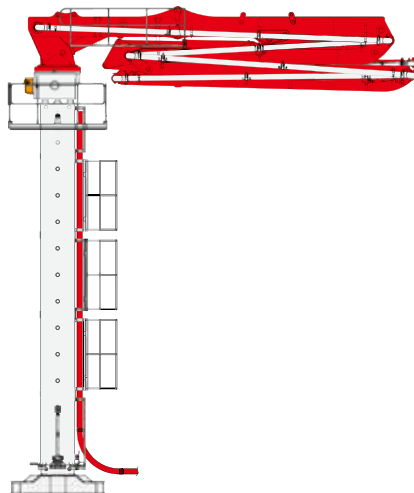
Boom type	4 Section R type
Horizontal reach	35.7 m
Depth reach	30.3 m
Delivery line	125 mm
End hose length	3.5 m

KB-M36Z



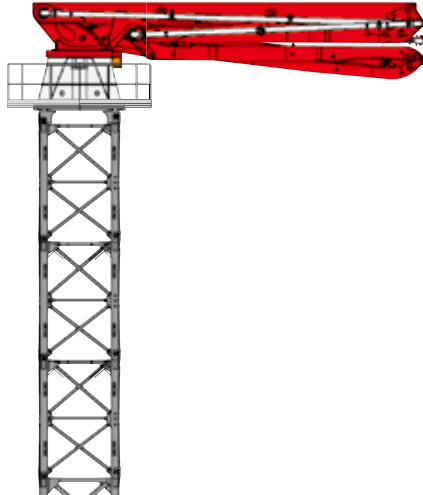
Boom type	5 Section R, Z type
Horizontal reach	35.6 m
Depth reach	30.7 m
Delivery line	125 mm
End hose length	3.5 m

KB-M38Z



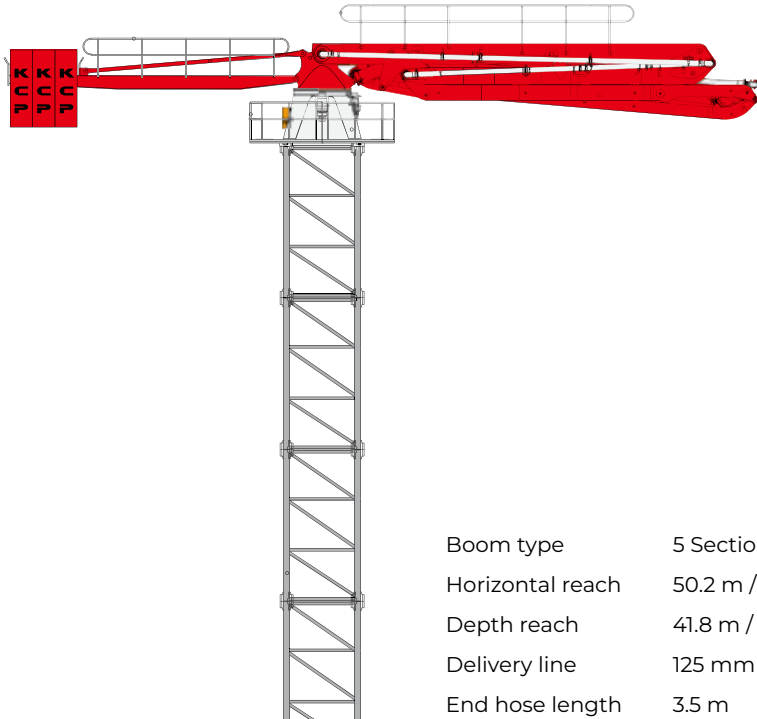
Boom type	5 Section R, Z type
Horizontal reach	36.9 m
Depth reach	32.2 m
Delivery line	125 mm
End hose length	3.5 m

KB-M42Z



Boom type	5 Section R, Z type
Horizontal reach	40.0 m
Depth reach	35.4 m
Delivery line	125 mm
End hose length	3.5 m

KB-M52RZ / KB-M56RZ



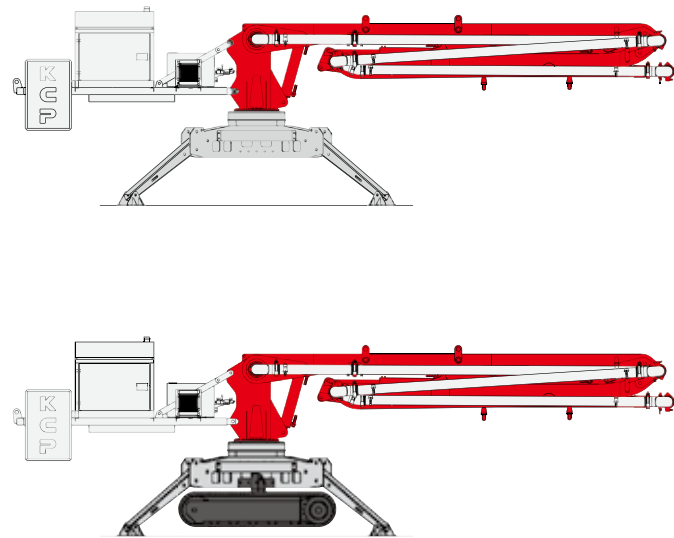
Boom type	5 Section R, Z type
Horizontal reach	50.2 m / 53.8 m
Depth reach	41.8 m / 44.4 m
Delivery line	125 mm
End hose length	3.5 m

► Photos and drawings are for illustrative purpose only. / ► Right to make technical amendments reserved. / ► Both Rexroth and Kawasaki pump cell available. / ► Dimension will vary with different truck makes, models and specifications. / ► Maximum theoretical values listed.



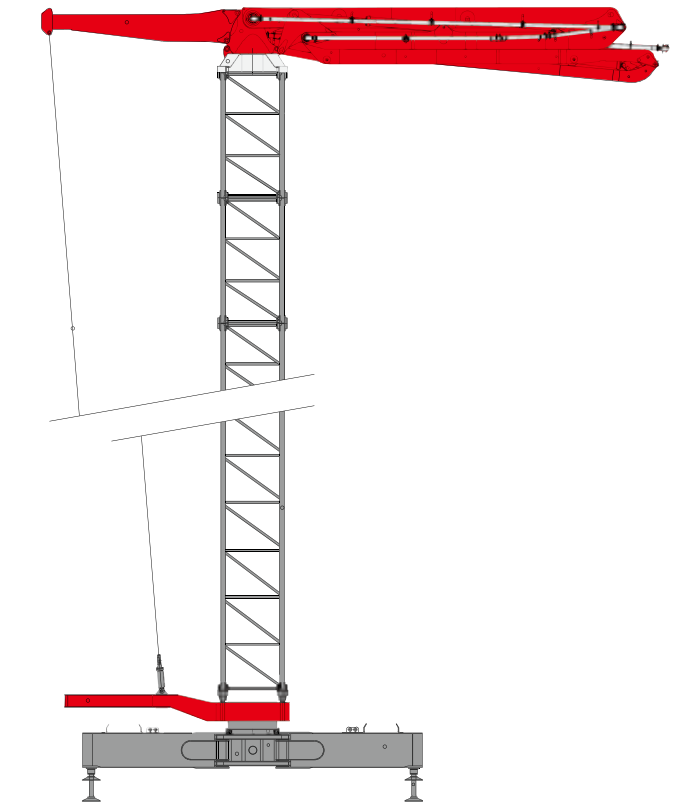
PLACING BOOMS

KS-M15Z



Boom type	3 Section Z type
Horizontal reach	14.8 m
Depth reach	10 m
Unfolding height	5.11 m
Section articulation	92°/190°/265°
Delivery line	125 mm
Proportional boom	Yes
End hose length	3.5 m
Total weight	5,600 kg / Crawler Type : 7,170 kg

KB-M60RZ



Boom type	5 Section R, Z type
Horizontal reach	55.9 m
Depth reach	45.7 m
Delivery line	125 mm
End hose length	3.5 m

Case Study: Split-Placing Boom Installation

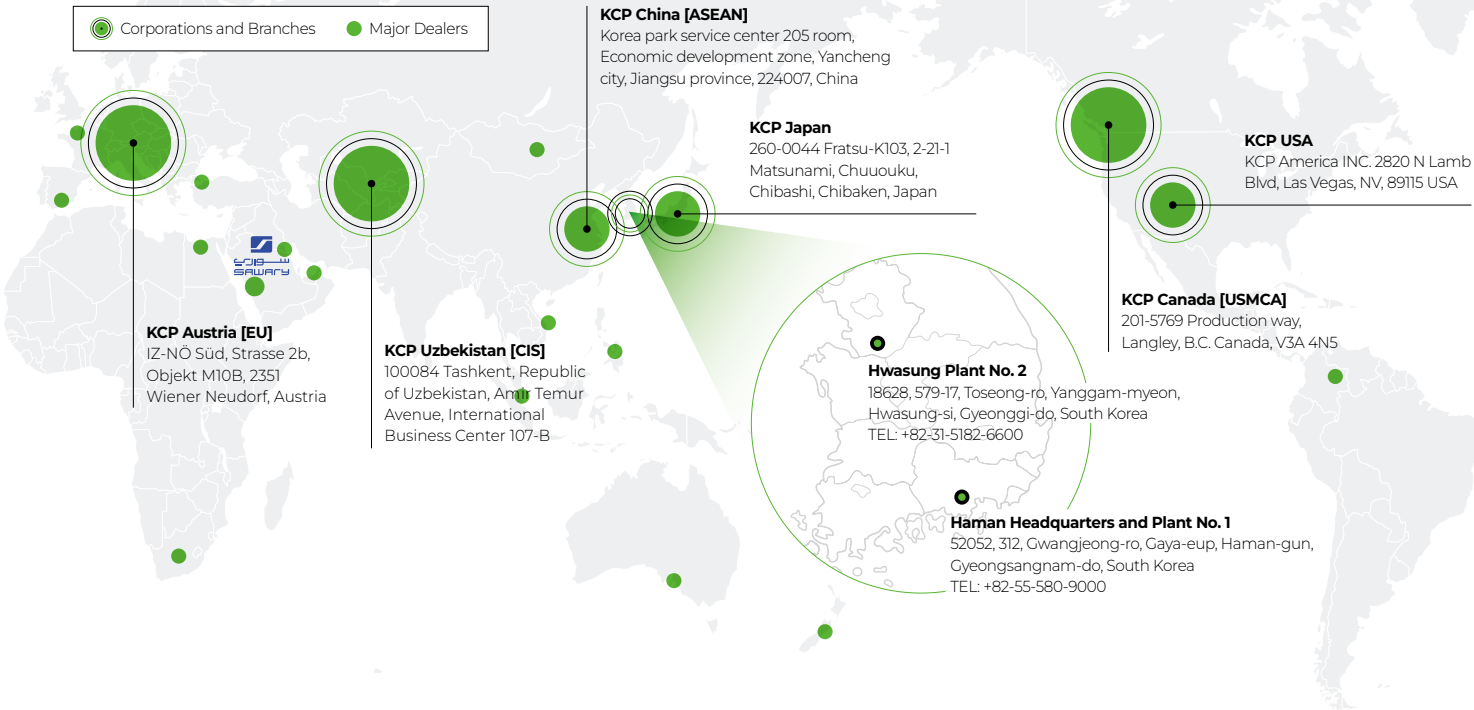
This case highlights the innovative use of a concrete pump truck's boom, detached and installed on a tower mast, to facilitate bridge pier construction. By employing this method, flexible and efficient concrete pouring is achieved, ensuring precision and adaptability for complex construction projects.



► Photos and drawings are for illustrative purpose only. / ► Right to make technical amendments reserved. / ► Both Rexroth and Kawasaki pump cell available. / ► Dimension will vary with different truck makes, models and specifications. / ► Maximum theoretical values listed.



GLOBAL PRESENCE



KCP | Expanding Globally with Local Expertise

With a network of over 50 dealers worldwide and local subsidiaries in Canada (USMCA), Austria (EU), and Uzbekistan (CIS), KCP is committed to delivering high-quality products and building a strong global presence.

We are enhancing our brand power by developing region-specific models and leveraging localized production facilities. To enter new markets, we are increasing direct exports and adopting market-focused sales strategies by partnering with top-tier dealers and cultivating new ones.

Our vision is to transition from domestically-focused production to global production bases, standardize manufacturing technologies and systems, and optimize production efficiency on a global scale.





KCP

SPECIAL (VACUUM) VEHICLES



KCP SPECIAL VEHICLES

Sewer Cleaning Truck (Hydro Vacuum)

Model : KSC0403 / KSC0705 / KSC0905 / KSC1306



Wet Vacuum Truck

Model : KVV09 / KVV12 / KVV15



Jet Washing Truck

Model : KJW06 / KJW09 / KJW15



Multi (Dry-Wet) Vacuum Truck

Model : KMV06 / KMV12 / KMV15 / KMV18



Water Spray Truck

Model : KWS075 / KWS12 / KWS16



Skip Loader

Model : KSL6



Articulating Boom Fire Truck

Model : KAF60



Wrecker Crane & Boom Underlift

Model : KR10T / KR15T / KR20T / KR30T



Cargo Crane

Model : KCC20000 / KCC8000 / KCC3000



Aerial Ladder Truck

Model : KORAL35 / KORAL46 / KORAL52



Heavy-Duty Underlift

Model : KR200



Mobile Concrete Distributor

Model : KMT4





WATER SPRAY TRUCK



WATER SPRAY TRUCK(HIGH PRESSURE) is designed for various purposes, such as spraying water to prevent dusty roads and washing signboards, signposts, and tunnels. Moreover, we could also utilize it for different landscaping works.



Line up



Specification

Model	KWS075	KWS12	KWS16
Chassis	7 Ton	17 Ton	19.5 Ton
Water tank capacity	7,500 L	12,000 L	16,000 L
Dimension	7,465 × 2,340 × 3,290 (mm)	10,135 × 2,495 × 3,285 (mm)	10,870 × 2,495 × 3,590 (mm)
Water spray pump	1,000 L/min, 52 m	2,000 L/min, 100 m	2,000L/min, 100 m
Pump operation type	Auxiliary engine + Direct-drive spray pump		
Main component	Chassis, Water tank, Spray bar, Flush nozzle(wide), High pressure spray pump, Tarpaulin(for jet/shower), Control box, Signboard(light), Rear-camera, etc.		



SEWER CLEANING TRUCK



SEWER CLEANING TRUCK is a very efficient vehicle designed for simultaneously performing two dredge operations using engine power and Total PTO: sewage penetration with a high-pressure pump and sewage sludge suction with a vacuum pump. Additionally, these two functions of SEWER CLEANING TRUCK have been proven to be effective in hydraulic excavation work, so it is widely used as a Hydro Vacuum Excavation Truck.

Hydro Vacuum Excavation Truck

Hydro excavation function Recently, hydraulic excavation using Hydro Vacuum Excavation Trucks has become more popular than traditional excavation. This is because it is more efficient, effective, and safer, among other benefits. KCP Hydro Vacuum Excavation Trucks can excavate buried gas pipes, wiring, and other facilities without damaging them.



Line up



Specification

Model	KSC0403	KSC0705	KSC0905	KSC1306
Chassis	8.5 Ton	15 Ton	17.5 Ton	23.5 Ton
Vacuum tank capacity	3.8 m ³	6.9 m ³	9 m ³	13 m ³
Water tank capacity	3.4 m ³	4.8 m ³	5 m ³	6.3 m ³
Dimension	7,540 × 2,470 × 3,505 (mm)	8,760 × 2,495 × 3,690 (mm)	10,050 × 2,495 × 3800 (mm)	10,955 × 2,495 × 3,920 (mm)
Vacuum pump	Root type, 20.4m ³ /min, -700mmHG	Root type, 40m ³ /min (100m ³ /min), -700mmHG	Root type, 75.3m ³ /min (150m ³ /min), -700mmHG	
High pressure pump	Piston type, 211 L/min, 210 bar		Piston type, 232 L/min, 300 bar (285 L/min, 250 bar)	
Main component	Chassis, Vacuum tank, Water tank, Total PTO, Cyclone, Suction boom, Silencer (circulating water tank), Main hose reel, Auxiliary hose reel, Overflow protector, etc.			



MULTI VACUUM TRUCK



MULTI VACUUM TRUCK could suck up dry materials such as dust, fallen coal, metal powder, and quicklime generated from steel mills and industrial sites. Also, a large-capacity vacuum pump sucks up wet materials such as sludge, wastewater, and waste oil residue. In particular, dry materials can be discharged by a pressure discharger to prevent dust scattering during dumping.



Line up



Specification

Model	KMOV6	KMOV12	KMOV15	KMOV18
Chassis	8.5 Ton	17.5 Ton	19.5 Ton	25 Ton
Vacuum tank capacity	6 m ³	12 m ³	15 m ³	18 m ³
Dimension	8,180 x 2,480 x 3,540 (mm)	10,045 x 2,495 x 3,980 (mm)	10,955 x 2,495 x 3,940 (mm)	12,110 x 2,495 x 3,930 (mm)
Vacuum pump	108 m ³ /min, -680 mmHG	150 m ³ /min, -680 mmHG	150 m ³ /min, -680 mmHG	180 m ³ /min, -680 mmHG
Main component	Chassis, Vacuum tank, Total PTO, Cyclone(for wet), Bag filter(for dry), Dry/wet converter, Suction filter, Rear-camera, Overflow protector, etc.			



WET VACUUM TRUCK



WET VACUUM TRUCK is designed to suck up moist materials such as high-weight, high-viscosity sludge and accumulated mud in an underground pit of more than 40M with a powerful vacuum.



Line up



KWV09



KWV12



KWV15

Specification

Model	KWV09	KWV12	KWV15
Chassis	17 Ton	19.5 Ton	25 Ton
Vacuum tank capacity	9 m ³	12 m ³	15 m ³
Dimension	9,680 × 2,495 × 3,520 (mm)	10,755 × 2,495 × 3,645 (mm)	11,335 × 2,495 × 3,875 (mm)
Vacuum pump	Root type, 75.3 m ³ /min, -700 mmHG		
Main component	Chassis, Vacuum tank, Total PTO, Overflow protector, Rear-camera, Silencer (Circulating water tank), Cyclone, etc.		



JET WASHING TRUCK



JET WASHING TRUCK is designed to allow dredging and cleaning of clogged sewers. Also, it could crush solidified sludge with high-pressure water from the WATER JET PUMP. It penetrates the clogged sewers and removes a stain or scale inside the sewer. Lastly, it is also equipped with a separate low-pressure pump to spray the road.



Line up



KJW06



KJW09



KJW15

Specification

Model	KJW06	KJW09	KJW15
Chassis	8.5 Ton	17 Ton	19.5 Ton
Water tank capacity	6 m ³	9 m ³	15 m ³
Dimension	7,600 × 2,400 × 2,950 (mm)	10,420 × 2,495 × 3,770 (mm)	10,685 × 2,495 × 3,945 (mm)
High pressure pump	Piston, 211 L/min, 190 bar	Piston, 232 L/min, 300 bar	Piston, 232 L/min, 300 bar
Main component	Chassis, Water jet pump, Total PTO, Water tank, Main hose reel, Rear-camera, etc.		



SKIP LOADER



SKIP LOADER is robustly designed to handle heavy loads safely and easily. This enables the dumping discharge by transporting cargo box containing heavy waste materials such as steel scrap generated from steel mills & industrial sites.



Specification

Model	KSL6
Chassis	15 Ton (Tractor)
Lifting capacity	22,000 kg
Dimension	7,800 x 2,495 x 3,700 (mm)
Scrap box	DIN Standard 6 m³, 9 m³
Power transmission type	Transmission PTO
Main component	Chassis, Sub-frame, Dump cylinder, Outrigger cylinder, Hydraulic system, Arm, Chain and lifting hook, Control



VACUUM LORRY



VACUUM LORRY is designed to collect wastewater from industrial sites such as chemical factories. Also, it could collect waste from livestock such as cattle shed or pigsty. Moreover, it is safely designed and constructed for vacuum suction and pressure discharge, making it one operator to operate.



Line up



KVL085



KVL150



KVL235

Specification

Model	KVL085	KVL150	KVL235
Chassis	8.5 Ton	17.5 Ton	23.5 Ton
Dimension	6,750 × 2,400 × 3,075 (mm)	9,000 × 2,500 × 3,650 (mm)	10,340 × 2,500 × 3,700 (mm)
Vacuum tank capacity	8,500 L	15,000 L	23,500 L
Pump operation type	Transmission PTO		
Vacuum pump	10 m³/min, -720 mmHG		
Main component	Chassis, Changeover valve (Vacuum suction/Pressure discharge), Safety valve, Overflow protector, Suction/Exhaust valve, Oil tank, Oil filter, Rear-camera, etc.		



PRESSURE DISCHARGE TANK LORRY



PRESSURE DISCHARGE TANK LORRY is designed to load powdery materials generated from steel mills and industrial sites to discharge them by compressed air. Moreover, the round-shaped tank mounted on small-size chassis maximizes the load capacity.



Line up



KTL20



KTL27

Specification

Model	KTL20	KTL27
Chassis	19.5 Ton	25 Ton
Tank capacity	20 m ³	27 m ³
Dimension	10,580 x 2,495 x 3,445 (mm)	11,850 x 2,495 x 3,660 (mm)
Discharge height	12 M @ Air pressure 3 kg/m ² ~ 20 M @ Air pressure 5 kg/m ²	
Connector	Exhaust – 100A, Air supply pipe – 50A	
Main component	Chassis, Ball valve, Tank, Upper and lower tank vibrators, Auxilliary side step (tank), Discharge pipe, Manhole, Relief valve, Residual pressure valve, etc.	

OWN YOUR CONCRETE PUMP TODAY WITH OUR FINANCING PROGRAM

The only financing program in the market covering New Arrival Concrete Pumps and Brand-New 2025 Euro5 Trucks

Only 5% Financing Charge per year

Trucks insurance at market minimum

Up to 3 Years Financing

No other hidden fees

✓ 100% opportunity

✓ Amazing Power



KCP FIRE TRUCK PRODUCT LINE UP INFORMATION



PUMP TRUCK

S - Pump Truck

M - Pump Truck

L - Pump Truck



S - Pump Truck

Water Tank	1,200L ~ 1,500L
Foam Tank	100L
Dimension	6,800mm × 2,200mm × 2,800mm
Pump	2,200L / min
Chassis	3.5ton / 4×2



M - Pump Truck

Water Tank	3,000L
Foam Tank	200L
Dimension	8,000mm × 2,500mm × 3,200mm
Pump	3,600L / min
Chassis	5ton / 4×2



L - Pump Truck

Water Tank	4,500L
Foam Tank	200L
Dimension	8,500mm × 2,500mm × 3,400mm
Pump	3,600L / min
Chassis	8.5ton / 4×2



WATER TANK TRUCK

S - Water Tank Truck

M - Water Tank Truck

L - Water Tank Truck



S - Water Tank Truck

Water Tank	4,500L
Dimension	7,800mm × 2,500mm × 3,200mm
Pump	3,600L / min
Chassis	5ton / 4×2



M - Water Tank Truck

Water Tank	6,000L
Dimension	8,500mm × 2,500mm × 3,400mm
Pump	3,600L / min
Chassis	8.5ton / 4×2



L - Water Tank Truck

Water Tank	12,000L
Dimension	10,000mm × 2,500mm × 3,700mm
Pump	3,600L / min or 5,600L / min
Chassis	16ton / 6×4



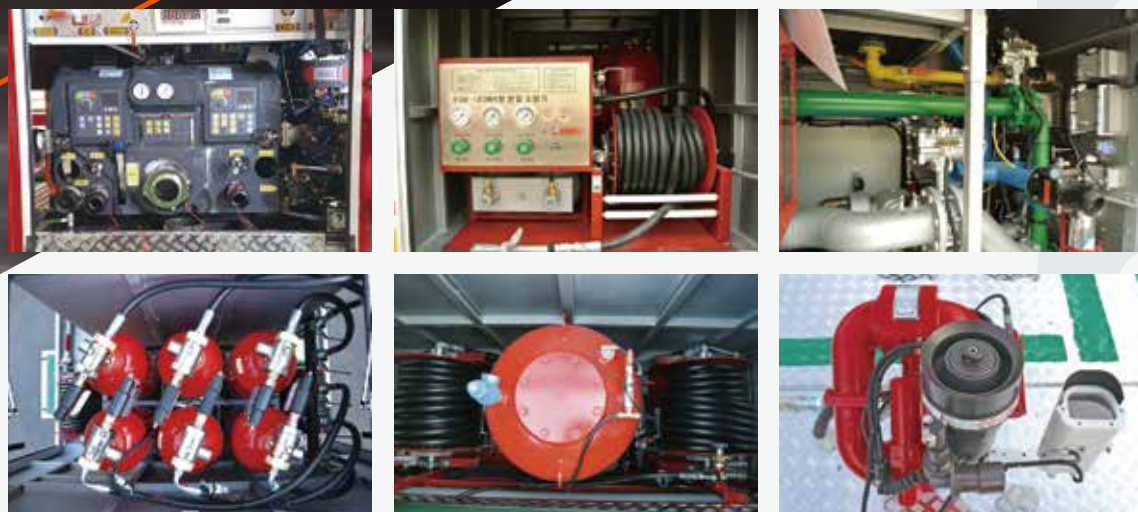


CHEMICAL TRUCK

CAFS Truck

M - Chemical Truck

L - Chemical Truck



CAFS Truck

Water Tank	3,000L
Foam Tank	400L (200L + 200L)
CAFS	ROSENBAUER N30 module
Dimension	8,000mm × 2,500mm × 3,200mm
Pump	3,600L / min (ROSENBAUER)
Chassis	5ton / 4×2

M - Chemical Truck

Water Tank	2,600L
Foam Tank	400L
Chemical	Powder 140kg
Dimension	7,800mm × 2,500mm × 3,200mm
Pump	3,600L / min
Chassis	5ton / 4×2



L - Chemical Truck

Water Tank	9,000L ~ 10,000L
Foam Tank	1,000L ~ 2,000L (1,000L + 1,000L)
Chemical	HFC-125 300kg
Dimension	10,500mm × 2,500mm × 3,800mm
Pump	5,600L / min
Chassis	16ton / 6×4





RESCUE TRUCK

- M - Rescue Truck
- L - Rescue Truck
- L - Rescue Truck



M - Rescue Truck

Dimension	7,800mm × 2,500mm × 3,300mm
Winch	5.4ton (Wire 30m)
Crane	3.1ton (Working Height 7m)
Lighting Tower	LED lamp
Chassis	5ton / 4×2

L - Rescue Truck

Dimension	8,500mm × 2,500mm × 3,500mm
Winch	5.4ton (Wire 30m)
Crane	6.9ton (Working Height 13m) - Bending type
Lighting Tower	LED lamp
Chassis	8.5ton / 4×2



L - Rescue Truck

Dimension	8,500mm × 2,500mm × 3,500mm
Winch	5.4ton (Wire 30m)
Crane	8ton (Working Height 8m) - Straight type
Lighting Tower	LED lamp
Chassis	8.5ton / 4×2



LADDER TRUCK

Pumper & Boom Rescue [20M]

Light Ladder Truck [22M]



Pumper & Boom Rescue [20M]

Water Tank	2,200L
Foam Tank	100L
Dimension	8,400mm × 2,380mm × 3,500mm
Pump	3,600L / min
Working Height	20m - Straight type
Chassis	5ton / 4×2
Cabin	2 Seat
Basket	Load Capacity of Lift - 250kg Elkhart Monitor Rotate 15°
Boom Control	Wireless remote control



Pumper & Boom Rescue [20M]

Water Tank	2,200L
Foam Tank	100L
Dimension	8,500mm × 2,370mm × 3,750mm
Pump	2,200L / min
Working Height	20m - Straight type
Chassis	8.5ton / 4×2
Cabin	5 Seat
Basket	Load Capacity of Lift - 250kg Elkhart Monitor Rotate 15°
Boom Control	Wireless remote control



Light Ladder Truck [22M]

Water Tank	1,000L
Foam Tank	100L
Dimension	8,650mm × 2,250mm × 3,780mm
Pump	2,200L / min
Working Height	22m - Ladder type
Chassis	5ton / 4×2
Cabin	2 Seat
Boom Control	Wireless remote control





AERIAL LADDER TRUCK

KFL - 35

Chassis	6×4
Cabin	Single
Working Height	35m
Basket Capacity	200kg
Working Range	20m
Working Angle	-7~75°
Ladder Section	4

KFL - 46

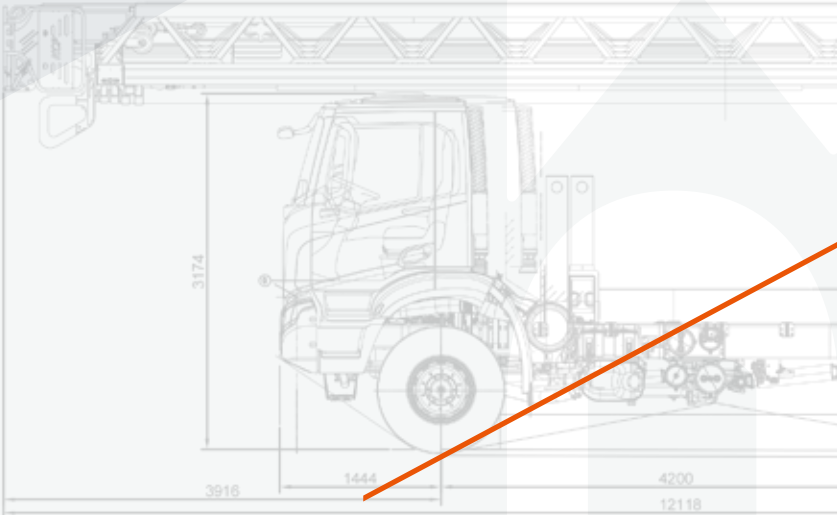
Chassis	6×4
Cabin	Single
Working Height	46m
Lift Capacity	250kg (Basket Capacity 200kg)
Working Range	20m
Working Angle	-7~75°
Ladder Section	5

* () : Option

KFL - 52

* () : Option

Chassis	6×4
Cabin	Single
Working Height	52m
Lift Capacity	250kg (Basket Capacity 200kg)
Working Range	20m
Working Angle	-7~75°
Ladder Section	6



ARTICULATING BOOM FIRE TRUCK

KAF60

Chassis	10×4
Foam Tank	5,000L
Water Pump	4,200 LPM at 8.5kg/cm ²
Foam Mixing	Auto Pressure Side Proportioner





Amazing Power



KCP

WORLD CLASS



SOLUTIONS FOR ANY PROJECT, ANYWHERE



Head Office – Jeddah
Tel: 012-6069333

Riyadh
Tel: 011-2310287

Dammam
Tel: 013-8142400

Qassim
Tel: 016-3854126